

LEA Name : Shamokin Area SD  
Address : 2000 W State St  
Coal Township , PA 17866

County : Northumberland  
AUN Number : 116496503  
LEA Type : SD

## Annual Financial Report Accuracy Certification Statement

For Fiscal Year Ending

**6/30/2016**

Pennsylvania Department of Education

&

Office of Comptroller Operations

PDE-2056: Intermediate Unit

PDE-2057: School District, AVTS/CTC, Charter School,  
and Special Program Jointure

**CERTIFICATION: By signing this page I agree that the electronic data submitted is a complete and accurate statement of the financial operations and status of the local education agency for the fiscal year. It has been prepared in accordance with generally accepted accounting principles and established Commonwealth of PA reporting guidelines.**

\_\_\_\_\_  
Chief School Administrator Signature

\_\_\_\_\_  
Date

\_\_\_\_\_  
Board Secretary Signature

\_\_\_\_\_  
Date

Karen Colangelo

\_\_\_\_\_  
Contact Person

kcolangelo@indians.k12.pa.us

\_\_\_\_\_  
Contact Person E-mail Address

(570)648-5752      Ext :4123

\_\_\_\_\_  
Contact Person Telephone Number

(570)648-2592

\_\_\_\_\_  
Contact Person Fax Number

**Audit Certification**  
**Annual Financial Report:**  
For Fiscal Year Ending **6/30/2016**  
**(Pursuant to PA School Code Section 218(b))**

LEA Name : Shamokin Area SD  
AUN Number : 116496503  
County : Northumberland

<b>Audit Certification Due:</b> 12/31/2016
---

This certification is applicable to:

- ☐ **Orig. Annual Financial Report submitted to  
Comptroller Operations:** \_\_\_\_\_  
Date
- ☐ **Annual Financial Report revisions submitted on:** \_\_\_\_\_  
Date

**Auditing Firm:**

**Auditor Contact Name:**

**Auditor Phone:**

**Auditor E-mail:**

CERTIFICATION: By signing this page I agree that the financial statements of the school have been properly audited as noted above pursuant to Article XXIV, and in the auditor's professional opinion, the Annual Financial Report (PDE-2057) submitted on the date referenced is materially consistent with the audited financial statements.

**Chief School Administrator**

**Board Secretary**

\_\_\_\_\_  
Signature

\_\_\_\_\_  
Date

\_\_\_\_\_  
Signature

\_\_\_\_\_  
Date

Karen Colangelo

\_\_\_\_\_  
Contact Person

kcolangelo@indians.k12.pa.us

\_\_\_\_\_  
Contact Person E-mail Address

(570)648-5752      Ext :4123

\_\_\_\_\_  
Contact Person Telephone Number

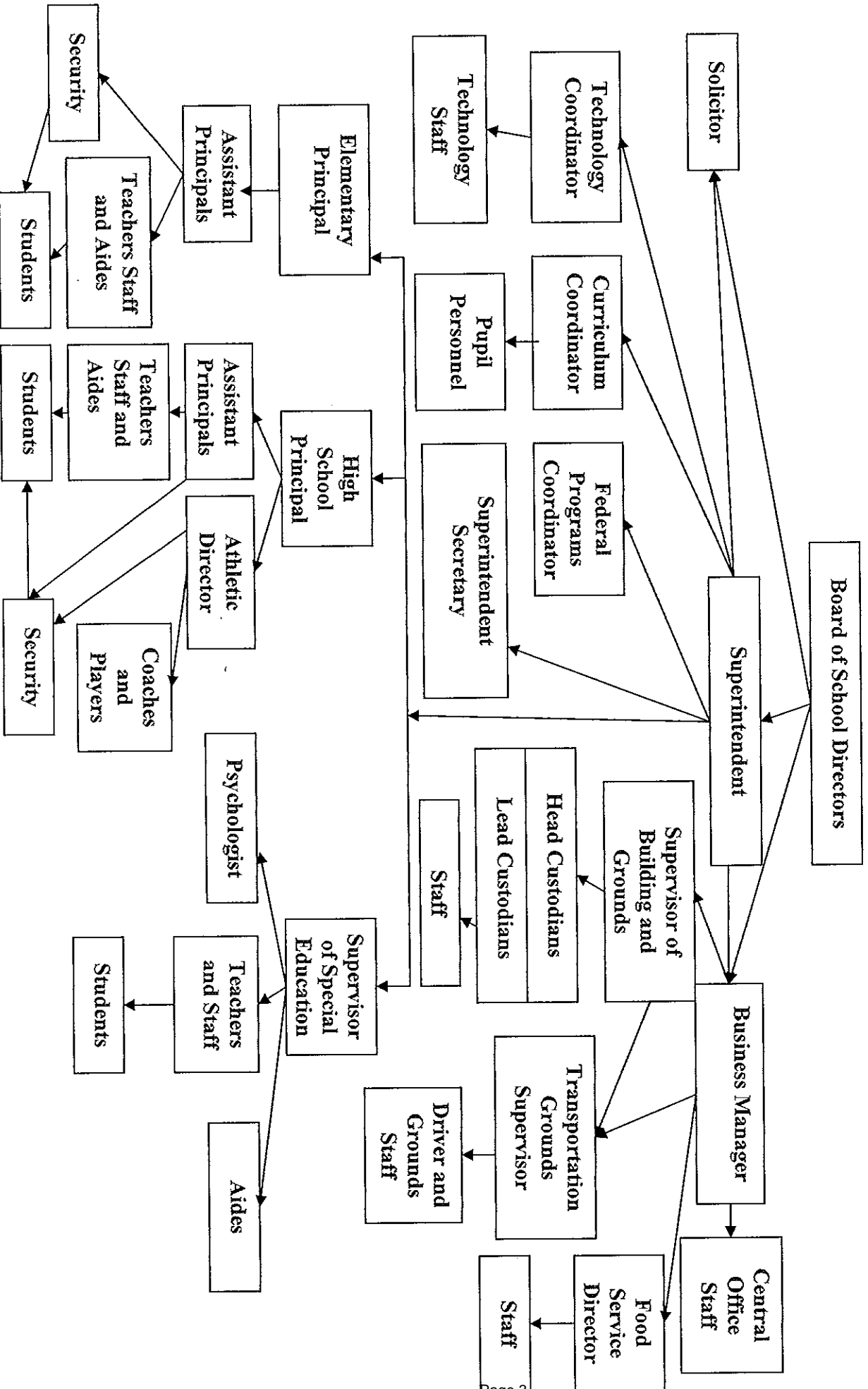
(570)648-2592

\_\_\_\_\_  
Contact Person Fax Number

# SHAMOKIN AREA SCHOOL DISTRICT ORGANIZATIONAL CHART

No. 008

SECTION: Local Board Procedures  
TITLE: Organization Chart  
ADOPTED:  
REVISED:



LEA : 116496503      Shamokin Area SD

Printed 11/18/2016 7:52:16 AM

Amounts Expressed in Whole Dollars		<u>General Fund</u> <u>(10)</u>	<u>Public Purpose Trust</u> <u>(27)</u>	<u>Other Compt Approved</u> <u>(28)</u>	<u>Athletic / Activity</u> <u>(29)</u>	<u>Capital Reserve (690.</u> <u>1850)</u> <u>(31)</u>
<b>Assets And Deferred Outflows Of Resources</b>						
<b>Assets</b>						
0100	Cash and Cash Equivalents	7,149,363				
0110	Investments	777,683				
0120	Taxes Receivable	2,314,667				
0130	Due From Other Funds					
0141	Due From Other Governments	4,011,721				
0142	State Revenue Receivable	18,942				
0143	Federal Revenue Receivable	633,513				
0145	Other Intergovernmental Revenue Receivable					
0146	Due from Primary Government					
0147	Due from Component Unit					
0150	Other Receivables	(31,801)				
0170	Inventories					
0180	Prepaid Expenses (Expenditures)					
0190	Other Current Assets					
<b>Total Assets</b>		<b>\$14,874,088</b>				
0910	Deferred Outflows of Resources					
<b>Total Assets And Deferred Outflows Of Resources</b>		<b>\$14,874,088</b>				

LEA : 116496503      Shamokin Area SD

Printed 11/18/2016 7:52:16 AM

Amounts Expressed in Whole Dollars		<u>Capital Reserve (1431)</u> <u>(32)</u>	<u>Other Capital Projects</u> <u>Fund</u> <u>(39)</u>	<u>Debt Service</u> <u>(40)</u>	<u>Permanent</u> <u>(90)</u>	<u>Total Governmental</u> <u>Funds</u>
<b>Assets And Deferred Outflows Of Resources</b>						
<b>Assets</b>						
0100	Cash and Cash Equivalents	1,836,649	199			8,986,211
0110	Investments					777,683
0120	Taxes Receivable					2,314,667
0130	Due From Other Funds					
0141	Due From Other Governments					4,011,721
0142	State Revenue Receivable					18,942
0143	Federal Revenue Receivable					633,513
0145	Other Intergovernmental Revenue Receivable					
0146	Due from Primary Government					
0147	Due from Component Unit					
0150	Other Receivables	7,955				(23,846)
0170	Inventories					
0180	Prepaid Expenses (Expenditures)					
0190	Other Current Assets					
<b>Total Assets</b>		<b>\$1,844,604</b>	<b>\$199</b>			<b>\$16,718,891</b>
0910	Deferred Outflows of Resources					
<b>Total Assets And Deferred Outflows Of Resources</b>		<b>\$1,844,604</b>	<b>\$199</b>			<b>\$16,718,891</b>

LEA : 116496503      Shamokin Area SD

Printed 11/18/2016 7:52:16 AM

Amounts Expressed in Whole Dollars		<u>General Fund</u> <u>(10)</u>	<u>Public Purpose Trust</u> <u>(27)</u>	<u>Other Compt Approved</u> <u>(28)</u>	<u>Athletic / Activity</u> <u>(29)</u>	<u>Capital Reserve (690.</u> <u>1850)</u> <u>(31)</u>
<b>Liabilities And Deferred Inflows Of Resources And Fund Balances</b>						
<b>Liabilities</b>						
0400	Due to Other Funds	(2,459)				
0411	Due to Other Governments					
0412	Due to Primary Government					
0413	Due to Component Unit					
0420	Accounts Payable	2,159,531				
0430	Contracts Payable					
0440	Current Portion of Long-Term Debt					
0450	Short-Term Payables					
0461	Accrued Salaries and Benefits	1,628,981				
0462	Payroll Deductions and Withholding	921,329				
0480	Unearned Revenues					
0490	Other Current Liabilities	150				
<b>Total Liabilities</b>		<b>\$4,707,532</b>				
0950	Deferred Inflows of Resources	2,421,144				
<b>Fund Balances</b>						
0810	Nonspendable Fund Balance					
0820	Restricted Fund Balance					
0830	Committed Fund Balance					
0840	Assigned Fund Balance	2,000,000				
0850	Unassigned Fund Balance	5,745,412				
<b>Total Fund Balances</b>		<b>\$7,745,412</b>				
<b>Total Liabilities, Deferred Inflows Of Resources And Fund Balances</b>		<b>\$14,874,088</b>				

LEA : 116496503      Shamokin Area SD

Printed 11/18/2016 7:52:16 AM

Amounts Expressed in Whole Dollars	<u>Capital Reserve (1431)</u> <u>(32)</u>	<u>Other Capital Projects</u> <u>Fund</u> <u>(39)</u>	<u>Debt Service</u> <u>(40)</u>	<u>Permanent</u> <u>(90)</u>	<u>Total Governmental</u> <u>Funds</u>
<b>Liabilities And Deferred Inflows Of Resources And Fund Balances</b>					
<b>Liabilities</b>					
0400 Due to Other Funds					(2,459)
0411 Due to Other Governments					
0412 Due to Primary Government					
0413 Due to Component Unit					
0420 Accounts Payable	3,610				2,163,141
0430 Contracts Payable					
0440 Current Portion of Long-Term Debt					
0450 Short-Term Payables					
0461 Accrued Salaries and Benefits					1,628,981
0462 Payroll Deductions and Withholding					921,329
0480 Unearned Revenues					
0490 Other Current Liabilities					150
<b>Total Liabilities</b>	<b>\$3,610</b>				<b>\$4,711,142</b>
0950 Deferred Inflows of Resources					2,421,144
<b>Fund Balances</b>					
0810 Nonspendable Fund Balance					
0820 Restricted Fund Balance	1,840,994	199			1,841,193
0830 Committed Fund Balance					
0840 Assigned Fund Balance					2,000,000
0850 Unassigned Fund Balance					5,745,412
<b>Total Fund Balances</b>	<b>\$1,840,994</b>	<b>\$199</b>			<b>\$9,586,605</b>
<b>Total Liabilities, Deferred Inflows Of Resources And Fund Balances</b>	<b>\$1,844,604</b>	<b>\$199</b>			<b>\$16,718,891</b>

Amounts Expressed in Whole Dollars		<u>General Fund</u> <u>(10)</u>	<u>Public Purpose Trust</u> <u>(27)</u>	<u>Other Compt Approved</u> <u>(28)</u>	<u>Athletic / Activity</u> <u>(29)</u>	<u>Capital Reserve</u> <u>(690.</u> <u>1850)</u> <u>(31)</u>
<b>Revenues</b>						
6000	Revenue from Local Sources	8,510,467				
7000	Revenue from State Sources	17,971,318				
8000	Revenue from Federal Sources	1,344,479				
<b>Total Revenues</b>		<b>\$27,826,264</b>				
<b>Expenditures</b>						
1000	Instruction	18,732,058				
2000	Support Services	9,199,724				
3000	Operation of Non-Instructional Services	500,855				
4000	Facilities Acquisition, Construction and Improvement Services	5,469				
5110	Debt Service					
5130	Refund of Prior Year Revenues / Receipts					
5140	Short-Term Borrowing – Interest and Costs					
<b>Total Expenditures</b>		<b>\$28,438,106</b>				
<b>Excess (Deficiency) Of Revenues Over Expenditures</b>		<b>(\$611,842)</b>				
<b>Other Financing Sources (Uses)</b>						
9110	Face Value of Bonds Issued					
9120	Proceeds from Refunding of Bonds					
9130	Bond Premiums					
9200	Proceeds from Extended-Term Financing					
9300	Interfund Transfers - IN					
9400	Sale of or Compensation for Loss of Fixed Assets					
9710	Transfers from Component Units					
9720	Transfers from Primary Governments					
9910	Other Financing Sources Not Listed in the 9000 Series					
9990	Insurance Recoveries					
5120	Debt Service – Refunded Bonds					
5150	Bond Discounts					
5200	Interfund Transfers – Out	56,469				
5300	Transfers Out to Component Units/Primary Governments					
<b>Total Other Financing Sources (Uses)</b>		<b>(\$56,469)</b>				



LEA : 116496503      Shamokin Area SD

Printed 11/18/2016 7:52:19 AM

Amounts Expressed in Whole Dollars		<u>Capital Reserve (1431)</u> <u>(32)</u>	<u>Other Capital Projects</u> <u>Fund</u> <u>(39)</u>	<u>Debt Service</u> <u>(40)</u>	<u>Permanent</u> <u>(90)</u>	<u>Total Governmental</u> <u>Funds</u>
<b>Revenues</b>						
6000	Revenue from Local Sources	342,856	186			8,853,509
7000	Revenue from State Sources					17,971,318
8000	Revenue from Federal Sources					1,344,479
<b>Total Revenues</b>		<b>\$342,856</b>	<b>\$186</b>			<b>\$28,169,306</b>
<b>Expenditures</b>						
1000	Instruction					18,732,058
2000	Support Services	108,155				9,307,879
3000	Operation of Non-Instructional Services					500,855
4000	Facilities Acquisition, Construction and Improvement Services		3,337,469			3,342,938
5110	Debt Service	505,467				505,467
5130	Refund of Prior Year Revenues / Receipts					
5140	Short-Term Borrowing – Interest and Costs					
<b>Total Expenditures</b>		<b>\$613,622</b>	<b>\$3,337,469</b>			<b>\$32,389,197</b>
<b>Excess (Deficiency) Of Revenues Over Expenditures</b>		<b>(\$270,766)</b>	<b>(\$3,337,283)</b>			<b>(\$4,219,891)</b>
<b>Other Financing Sources (Uses)</b>						
9110	Face Value of Bonds Issued					
9120	Proceeds from Refunding of Bonds					
9130	Bond Premiums					
9200	Proceeds from Extended-Term Financing		3,337,469			3,337,469
9300	Interfund Transfers - IN					
9400	Sale of or Compensation for Loss of Fixed Assets					
9710	Transfers from Component Units					
9720	Transfers from Primary Governments					
9910	Other Financing Sources Not Listed in the 9000 Series					
9990	Insurance Recoveries					
5120	Debt Service – Refunded Bonds					
5150	Bond Discounts					
5200	Interfund Transfers – Out					56,469
5300	Transfers Out to Component Units/Primary Governments					
<b>Total Other Financing Sources (Uses)</b>			<b>\$3,337,469</b>			<b>\$3,281,000</b>

Amounts Expressed in Whole Dollars		<u>General Fund</u> <u>(10)</u>	<u>Public Purpose Trust</u> <u>(27)</u>	<u>Other Compt Approved</u> <u>(28)</u>	<u>Athletic / Activity</u> <u>(29)</u>	<u>Capital Reserve</u> <u>(690.</u> <u>1850)</u> <u>(31)</u>
<b>Special And Extraordinary Items</b>						
9920	Special Items – Gains					
9930	Extraordinary Items – Gains					
5520	Special Items – Losses					
5530	Extraordinary Items – Losses					
<b>Net Change In Fund Balances</b>		<b>(\$668,311)</b>				
<b>Fund Balance</b>						
0001	Fund Balance - Beginning of Fiscal Year	8,413,723				
<b>Fund Balance - End Of Year</b>		<b>\$7,745,412</b>				

Amounts Expressed in Whole Dollars		<u>Capital Reserve (1431</u> <u>(32)</u>	<u>Other Capital Projects</u> <u>Fund</u> <u>(39)</u>	<u>Debt Service</u> <u>(40)</u>	<u>Permanent</u> <u>(90)</u>	<u>Total Governmental</u> <u>Funds</u>
<b>Special And Extraordinary Items</b>						
9920	Special Items – Gains					
9930	Extraordinary Items – Gains					
5520	Special Items – Losses					
5530	Extraordinary Items – Losses					
<b>Net Change In Fund Balances</b>		<b>(\$270,766)</b>	<b>\$186</b>			<b>(\$938,891)</b>
<b>Fund Balance</b>						
0001	Fund Balance - Beginning of Fiscal Year	2,111,760	13			10,525,496
<b>Fund Balance - End Of Year</b>		<b>\$1,840,994</b>	<b>\$199</b>			<b>\$9,586,605</b>

LEA : 116496503      Shamokin Area SD

Printed 11/18/2016 7:52:20 AM

Amounts Expressed in Whole Dollars	Food Service (51)	Child Care Operations (52)	Other Enterprise (58)	TOTAL	Internal Service (60)
<b>Assets And Deferred Outflows Of Resources</b>					
<b>Current Assets</b>					
0100 Cash and Cash Equivalents	963,478			963,478	
0110 Investments					
0130 Due From Other Funds	876			876	
0141 Due From Other Governments					
0142 State Revenue Receivable	10,964			10,964	
0143 Federal Revenue Receivable	255,709			255,709	
0146 Due from Primary Government					
0147 Due from Component Unit					
0150 Other Receivables	75,000			75,000	
0170 Inventories	27,566			27,566	
0180 Prepaid Expenses (Expenditures)					
0190 Other Current Assets					
<b>Total Current Assets</b>	<b>\$1,333,593</b>			<b>\$1,333,593</b>	
<b>Noncurrent Assets</b>					
0211 Land					
0212 Site Improvements (Net)					
0220 Buildings and Building Improvements (Net)					
0230 Machinery, Equipment and Furniture (Net)	140,216			140,216	
0250 Construction in Progress					
0260 Long Term Prepayments					
0290 Other Noncurrent Assets					
<b>Total Noncurrent Assets</b>	<b>\$140,216</b>			<b>\$140,216</b>	
0910 Deferred Outflows of Resources					
<b>Total Assets And Deferred Outflows Of Resources</b>	<b>\$1,473,809</b>			<b>\$1,473,809</b>	

LEA : 116496503      Shamokin Area SD

Printed 11/18/2016 7:52:20 AM

Amounts Expressed in Whole Dollars	Food Service (51)	Child Care Operations (52)	Other Enterprise (58)	TOTAL	Internal Service (60)
<b>Liabilities And Deferred Inflows Of Resources And Net Position</b>					
<b>Current Liabilities</b>					
0400 Due to Other Funds					
0411 Due to Other Governments					
0413 Due to Component Unit					
0420 Accounts Payable	109,596			109,596	
0430 Contracts Payable					
0440 Current Portion of Long-Term Debt					
0450 Short-Term Payables					
0461 Accrued Salaries and Benefits					
0462 Payroll Deductions and Withholding					
0480 Unearned Revenues	11,234			11,234	
0490 Other Current Liabilities	515,551			515,551	
<b>Total Current Liabilities</b>	<b>\$636,381</b>			<b>\$636,381</b>	
<b>Noncurrent Liabilities</b>					
0510 Bonds Payable					
0520 Extended-Term Financing Agreements Payable					
0530 Lease-Purchase Obligations					
0540 Accumulated Compensated Absences					
0550 Authority Lease Obligations					
0560 Other Post-Employment Benefits (OPEB)					
0570 Net Pension Liability					
0599 Other Long-Term Liabilities					
<b>Total Noncurrent Liabilities</b>					
<b>Total Liabilities</b>	<b>\$636,381</b>			<b>\$636,381</b>	
0950 Deferred Inflows of Resources					
<b>Net Position</b>					
0791 Invested in Capital Assets, Net of Related Debt	140,215			140,215	
0008 Restricted Net Position (0792 – 0798)					
0799 Unrestricted Net Position	697,213			697,213	
<b>Total Net Position</b>	<b>\$837,428</b>			<b>\$837,428</b>	
<b>Total Liabilities And Deferred Inflows Of Resources And Net Position</b>	<b>\$1,473,809</b>			<b>\$1,473,809</b>	

Amounts Expressed in Whole Dollars	<u>Food Service</u> <u>(51)</u>	<u>Child Care Operations</u> <u>(52)</u>	<u>Other Enterprise</u> <u>(58)</u>	<u>TOTAL</u>	<u>Internal Service</u> <u>(60)</u>
<b>Operating Revenues</b>					
6600 Food Service Revenue	58,204			58,204	
0071 Charges for Services					
0072 Other Operating Revenue					
<b>Total Operating Revenues</b>	<b>\$58,204</b>			<b>\$58,204</b>	
<b>Operating Expenses</b>					
100 Personnel Services – Salaries	28,607			28,607	
200 Personnel Services – Employee Benefits	26,873			26,873	
300 Purchased Professional and Technical Services	28			28	
400 Purchased Property Services	7,320			7,320	
500 Other Purchased Services	578,186			578,186	
600 Supplies	607,031			607,031	
740 Depreciation	70,560			70,560	
810 Dues and Fees	884			884	
890 Miscellaneous Expenditures					
<b>Total Operating Expenses</b>	<b>\$1,319,489</b>			<b>\$1,319,489</b>	
<b>Operating Income (Loss)</b>	<b>(\$1,261,285)</b>			<b>(\$1,261,285)</b>	
<b>Non Operating Revenues (Expenses)</b>					
6500 Earnings on Investments	1,868			1,868	
6920 Contributions and Donations from Private Sources					
6930 Gains or Losses on Sale of Fixed Assets					
6991 Refunds of a Prior Year Expenditure	(75,041)			(75,041)	
7000 Revenue from State Sources	48,195			48,195	
8000 Revenue from Federal Sources	1,044,778			1,044,778	
820 Claims and Judgments Against the LEA					
830 Interest					
<b>TOTAL Non Operating Revenues (Expenses)</b>	<b>\$1,019,800</b>			<b>\$1,019,800</b>	
<b>Income (Loss) Before Contributions And Transfers</b>	<b>(\$241,485)</b>			<b>(\$241,485)</b>	

Amounts Expressed in Whole Dollars	<u>Food Service</u> <u>(51)</u>	<u>Child Care Operations</u> <u>(52)</u>	<u>Other Enterprise</u> <u>(58)</u>	<u>TOTAL</u>	<u>Internal Service</u> <u>(60)</u>
<b>Contributions, Transfers, and Special and Extraordinary Items</b>					
5200 Interfund Transfers – Out					
5300 Transfers Out to Component Units/Primary Governments					
5520 Special Items – Losses					
5530 Extraordinary Items – Losses					
9300 Interfund Transfers - IN	56,469			56,469	
9500 Capital Contributions					
9700 Transfers IN From Component Units/Primary Governments					
9920 Special Items – Gains					
9930 Extraordinary Items – Gains					
<b>Change In Net Position</b>	<b>(\$185,016)</b>			<b>(\$185,016)</b>	
0002 Net Position - Beginning of Fiscal Year	1,022,444			1,022,444	
0003 Accounting Changes / Residual Equity Transfers					
<b>Net Position - End Of Year</b>	<b>\$837,428</b>			<b>\$837,428</b>	

LEA : 116496503      Shamokin Area SD

Printed 11/18/2016 7:52:24 AM

Amounts Expressed in Whole Dollars	Food Service (51)	Child Care Operations (52)	Other Enterprise (58)	TOTAL	Internal Service(60)
<b>Cash Flows From Operating Activities</b>					
0011 Cash Receipts From Users	91,083			91,083	
0012 Cash Receipts From Assessments Made to Other Funds					
0013 Cash Receipts From Earnings on Investments					
0014 Cash Receipts From Other Operating Revenue					
0015 Cash Payments To Employees For Services					
0016 Cash Payments For Insurance Claims					
0017 Cash Payments To Suppliers For Goods and Services	889,839			889,839	
0018 Cash Payments For Other Operating Expenses					
<b>Net Cash Provided By (Used For) Operating Activities</b>	<b>(\$798,756)</b>			<b>(\$798,756)</b>	
<b>Cash Flows From Non-Capital Financing Activities</b>					
0021 Receipts From Local Sources - 6000					
0022 Receipts From State Sources - 7000	44,979			44,979	
0023 Receipts From Federal Sources -8000	974,475			974,475	
0024 Notes and Loans Received (Repaid)					
0025 Interest Paid on Notes/Loans - 5100-830					
0026 Operating Transfers In (Out)/Residual Equity Trans					
0027 Operating Transfers In (Out) Primary Government / Comp Unit	56,469			56,469	
0028 Receipts From Refund of Prior Year Expenditures - 6991	(75,041)			(75,041)	
0029 Special and Extraordinary Gains (losses)	(479)			(479)	
<b>Net Cash Prov By (Used for) Non-Capital Financing Activities</b>	<b>\$1,000,403</b>			<b>\$1,000,403</b>	
<b>Cash Flows From Capital and Related Financing Activities</b>					
0031 Payments For Fac Acq, Const, and Imp - 4000	(35,159)			(35,159)	
0032 Gain / (Loss) on Sale of Fixed Assets - 6930					
0033 Proceeds From Extended Term Financing - 9200					
0034 Principal Paid on Financing Agreements					
0035 Interest Paid on Financing Agreements - 5100-830					
0036 (Inc) Dec in Contributed Capital					
<b>Net Cash Prov By (Used for) Capital and Related Financing Activities</b>	<b>(\$35,159)</b>			<b>(\$35,159)</b>	
<b>Cash Flows From Investing Activities</b>					
0041 Earnings on Investments - 6500	1,868			1,868	
0042 Purchase of Inv Securities / Deposits to Inv Pools					
0043 Receipts From Investment Pool Withdrawals					
0044 Proceeds from Sale and Maturity of Inv Securities					
0045 Loans Received (Paid)					
<b>Net Cash Prov By (Used for) Investing Activities</b>	<b>\$1,868</b>			<b>\$1,868</b>	



LEA : 116496503      Shamokin Area SD

Printed 11/18/2016 7:52:24 AM

	Food Service (51)	Child Care Operations (52)	Other Enterprise (58)	TOTAL	Internal Service (60)
<b>Net Increase (Decrease) in Cash Flows</b>	168,356			168,356	
0004 Cash and Cash Equivalents Beginning of Year	795,122			795,122	
<b>Cash and Cash Equivalents at Year End</b>	<b>\$963,478</b>			<b>\$963,478</b>	
<b>Reconciliation of Operating Income (Loss) To Net Cash Provided by (Used For) Operating Activities</b>					
0005 Operating Income (Loss) per REP	(1,261,285)			(1,261,285)	
<b>Adjustments</b>					
0051 Depreciation and Net Amortization	70,560			70,560	
0052 Provision for Uncollectible Accounts					
0053 Other Adjustments					
<b>Effect of Changes in Assets, Liabilities, Deferred Outflows and Deferred Inflows</b>					
0054 (Inc) Dec In Accounts Receivable (0120-0150)	27,356			27,356	
0055 Advances to Other Funds (0160)					
0056 (Inc) Dec in Inventories (0170)	(2,687)			(2,687)	
0057 (Inc) Dec in Prepaid Expenses (0180)					
0058 (Inc) Dec in Other Current or Noncurrent Assets					
0064 Deferred Outflows (0910)					
0059 Inc (Dec) in Accounts Payable (0400-0450)	361,777			361,777	
0060 Inc (Dec) in Accrued Salaries/Benefits (0461)					
0065 Inc (Dec) in Net Pension Liabilities (0570)					
0066 Inc (Dec) in Other Postemp Benefit Oblig (0560)					
0061 Inc (Dec) in Payroll Deductions/Withholding (0462)					
0062 Inc (Dec) in Unearned Revenue (0480)	5,523			5,523	
0063 Inc (Dec) in Other Current or Noncurrent Liabilities					
0067 Deferred Inflows (0950)					
<b>Total Adjustments</b>	<b>\$462,529</b>			<b>\$462,529</b>	
<b>Cash Provided By (Used for) Total</b>	<b>(\$798,756)</b>			<b>(\$798,756)</b>	

COMBINED STATEMENT OF CASH FLOWS  
SCHEDULE OF NONCASH INVESTING, CAPITAL, AND FINANCING ACTIVITIES

Explanation of Transaction and Balance Sheet Effect	Amount
Total	

LEA : 116496503     Shamokin Area SD

Printed 11/18/2016 7:52:25 AM

Amounts Expressed in Whole Dollars	<u>Private Purpose Trust</u> <u>(71)</u>	<u>Investment Trust</u> <u>(72)</u>	<u>Pension Trust</u> <u>(73)</u>	<u>Activity</u> <u>(81)</u>
<b>Assets And Deferred Outflows Of Resources</b>				
<b>Assets</b>				
0100 Cash and Cash Equivalents	61,508			160,069
0110 Investments				
0130 Due From Other Funds				
0147 Due from Component Unit				
0150 Other Receivables				
0170 Inventories				
0180 Prepaid Expenses (Expenditures)				
0190 Other Current Assets				
0220 Buildings and Building Improvements (Net)				
0230 Machinery, Equipment and Furniture (Net)				
<b>Total Assets</b>	<b>\$61,508</b>			<b>\$160,069</b>
0910 Deferred Outflows of Resources				
<b>Total Assets And Deferred Outflows Of Resources</b>	<b>\$61,508</b>			<b>\$160,069</b>

LEA : 116496503     Shamokin Area SD

Printed 11/18/2016 7:52:25 AM

Amounts Expressed in Whole Dollars		<u>Other Agency</u> <u>(89)</u>	<u>Discrete Component Units</u> <u>(98)</u>	<u>Discrete Component Units</u> <u>(99)</u>	<u>Total Fiduciary Funds</u>
<b>Assets And Deferred Outflows Of Resources</b>					
<b>Assets</b>					
0100	Cash and Cash Equivalents				221,577
0110	Investments				
0130	Due From Other Funds				
0147	Due from Component Unit				
0150	Other Receivables				
0170	Inventories				
0180	Prepaid Expenses (Expenditures)				
0190	Other Current Assets				
0220	Buildings and Building Improvements (Net)				
0230	Machinery, Equipment and Furniture (Net)				
<b>Total Assets</b>					<b>\$221,577</b>
0910	Deferred Outflows of Resources				
<b>Total Assets And Deferred Outflows Of Resources</b>					<b>\$221,577</b>

LEA : 116496503     Shamokin Area SD

Printed 11/18/2016 7:52:25 AM

Amounts Expressed in Whole Dollars	<u>Private Purpose Trust</u> <u>(71)</u>	<u>Investment Trust</u> <u>(72)</u>	<u>Pension Trust</u> <u>(73)</u>	<u>Activity</u> <u>(81)</u>
<b>Liabilities, Deferred Inflows Of Resources And Net Position</b>				
<b>Liabilities</b>				
0400 Due to Other Funds				
0411 Due to Other Governments				
0412 Due to Primary Government				
0413 Due to Component Unit				
0420 Accounts Payable				
0430 Contracts Payable				
0450 Short-Term Payables				
0461 Accrued Salaries and Benefits				
0462 Payroll Deductions and Withholding				
0480 Unearned Revenues				
0490 Other Current Liabilities				160,069
<b>Total Liabilities</b>				<b>\$160,069</b>
0950 Deferred Inflows of Resources				
<b>Net Position</b>				
0791 Invested in Capital Assets, Net of Related Debt				
0009 Restricted Net Position (0792 – 0798)				
0799 Unrestricted Net Position	61,508			
<b>Total Net Position</b>	<b>\$61,508</b>			
<b>Total Liabilities, Deferred Inflows Of Resources And Net Position</b>	<b>\$61,508</b>			<b>\$160,069</b>

LEA : 116496503      Shamokin Area SD

Printed 11/18/2016 7:52:25 AM

Amounts Expressed in Whole Dollars

<u>Other Agency</u> <u>(89)</u>	<u>Discrete Component Units</u> <u>(98)</u>	<u>Discrete Component Units</u> <u>(99)</u>	<u>Total Fiduciary Funds</u>
------------------------------------	--	--	------------------------------

Liabilities, Deferred Inflows Of Resources And Net Position

Liabilities

0400	Due to Other Funds			
0411	Due to Other Governments			
0412	Due to Primary Government			
0413	Due to Component Unit			
0420	Accounts Payable			
0430	Contracts Payable			
0450	Short-Term Payables			
0461	Accrued Salaries and Benefits			
0462	Payroll Deductions and Withholding			
0480	Unearned Revenues			
0490	Other Current Liabilities			160,069
Total Liabilities				\$160,069

0950 Deferred Inflows of Resources

Net Position

0791	Invested in Capital Assets, Net of Related Debt			
0009	Restricted Net Position (0792 – 0798)			
0799	Unrestricted Net Position			61,508
Total Net Position				\$61,508
Total Liabilities, Deferred Inflows Of Resources And Net Position				\$221,577

LEA : 116496503      Shamokin Area SD

Printed 11/18/2016 7:52:25 AM

Amounts Expressed in Whole Dollars	<u>Private Purpose Trust</u> <u>(71)</u>	<u>Investment Trust</u> <u>(72)</u>	<u>Pension Trust</u> <u>(73)</u>	<u>Discrete Component</u> <u>Units</u> <u>(98)</u>	<u>Discrete Component</u> <u>Units</u> <u>(99)</u>	<u>Total Fiduciary</u> <u>Funds</u>
<b>Additions</b>						
0091 Gifts and Contributions	9,861					9,861
0092 Other Additions	20					20
<b>Deductions</b>						
0093 Scholarships Awarded	2,355					2,355
0094 Other Deductions	36					36
<b>Change In Net Position</b>	<b>\$7,490</b>					<b>\$7,490</b>
0006 Net Position – Beginning of Fiscal Year	54,018					54,018
0007 Net Position Held in Trust for Pension Benefits						
<b>Net Position - End of Fiscal Year</b>	<b>\$61,508</b>					<b>\$61,508</b>

LEA : 116496503      Shamokin Area SD

General Fund (10)

Printed 11/18/2016 7:52:26 AM

Page - 1 of 3

	Revenue Reported In Current Year	Current Year Tax Accrual	Prior Year Tax Accrual	Taxes Collected In Current Year
<b>Revenue from Local Sources</b>				
6111 Current Real Estate Taxes	2,545,792.26			2,545,792.26
6113 Public Utility Realty Taxes	6,122.16			6,122.16
6114 Payments in Lieu of Current Taxes - State / Local	31,672.45			31,672.45
6120 Current Per Capita Taxes, Section 679	36,801.20			36,801.20
6141 Current Act 511 Per Capita Taxes	36,801.20			36,801.20
6143 Current Act 511 Local Services Taxes	27,260.57			27,260.57
6151 Current Act 511 Earned Income Taxes	1,375,362.84			1,375,362.84
6152 Current Act 511 Occupation Taxes	466,783.40			466,783.40
6153 Current Act 511 Real Estate Transfer Taxes	76,087.13			76,087.13
6155 Current Act 511 Business Privilege Taxes	224,960.41			224,960.41
6411 Delinquent Real Estate Taxes	361,466.24			361,466.24
6420 Delinquent Per Capita Taxes, Section 679	21,879.11			21,879.11
6451 Delinquent Act 511 Earned Income Taxes	13,429.96			13,429.96
6459 Delinquent Act 511 Taxes, Other Proportional Assessments	213,855.28			213,855.28
6500 Earnings on Investments	12,646.19			
6700 Revenues from LEA Activities	71,678.23			
6831 Federal Revenue Received from Other Pennsylvania Public LEAs	16,061.93			
6832 Federal IDEA Revenue Received as Pass Through	467,783.95			
6836 Federal ARRA Race to the Top Revenue Received as Pass Through	4,092.96			
6890 Other Revenue from Intermediary Sources	1,521.36			
6910 Rentals	891,310.09			
6920 Contributions and Donations from Private Sources	1,450.00			
6942 Summer School Tuition	4,530.00			
6949 Other Tuition from Patrons	1,533,290.56			
6969 All Other Services Provided Other Governments	29,591.45			
6991 Refunds of a Prior Year Expenditure	24,270.17			
6999 Other Revenues Not Specified Above	13,965.90			
<b>TOTAL Revenue from Local Sources</b>	<b>\$8,510,467.00</b>			<b>\$5,438,274.21</b>



	Revenue Reported In Current Year			
<b>Revenue from State Sources</b>				
7110 Basic Education Funding	12,071,851.45			
7160 Tuition for Orphans Subsidy	110,702.35			
7271 Special Education funds for School-Aged Pupils	1,640,689.46			
7292 Pre-K Counts	51,152.28			
7311 Pupil Transportation Subsidy	770,350.50			
7312 Nonpublic and Charter School Pupil Transportation Subsidy	90,866.91			
7330 Health Services (Medical, Dental, Nurse, Act 25)	49,594.18			
7340 State Property Tax Reduction Allocation	352,116.40			
7505 Ready to Learn Block Grant	440,583.00			
7810 State Share of Social Security and Medicare Taxes	468,579.43			
7820 State Share of Retirement Contributions	1,924,832.04			
<b>TOTAL Revenue from State Sources</b>	<b>\$17,971,318.00</b>			

	Revenue Reported In Current Year			
<b>Revenue from Federal Sources</b>				
8514 NCLB, Title I - Improving the Academic Achievement of the Disadvantaged	899,526.34			
8515 NCLB, Title II - Preparing, Training and Recruiting High Quality Teachers and Principals	177,976.45			
8517 NCLB, Title IV - 21St Century Schools	30,195.81			
8518 NCLB, Title V - Promoting Informed Parental Choice and Innovative Programs	102,487.34			
8519 NCLB, Title VI - Flexibility and Accountability	72,953.22			
8810 School-Based Access Medicaid Reimbursement Program (SBAP) Reimbursements (Access)	41,244.00			
8820 Medical Assistance Reimbursement for Administrative Claiming (Quarterly) Program	20,095.63			
<b>TOTAL Revenue from Federal Sources</b>	<b>\$1,344,478.79</b>			
<b>TOTAL FROM ALL SOURCES</b>	<b>\$27,826,263.79</b>			<b>\$5,438,274.21</b>

Revenue from Local Sources	8,510,467.00
Revenue from State Sources	17,971,318.00
Revenue from Federal Sources	1,344,478.79
Other Financing Sources	
<b>TOTAL FROM ALL SOURCES</b>	<b>\$27,826,263.79</b>

LEA : 116496503      Shamokin Area SD

Printed 11/18/2016 7:52:28 AM

<b>General Fund (10)</b>	
<b>1000 Instruction</b>	<b><u>Total</u></b>
<b>100 <u>Personnel Services – Salaries</u></b>	
100 Personnel Services – Salaries	8,411,880.33
<b>Total Personnel Services – Salaries</b>	<b>\$8,411,880.33</b>
<b>200 <u>Personnel Services – Employee Benefits</u></b>	
210 Group Insurance – Contracted Provider	2,591,131.56
220 Social Security Contributions	636,799.52
230 PSERS Retirement Contributions	2,176,036.46
240 Tuition Reimbursement	65,100.21
250 Unemployment Compensation	13,861.40
260 Workers' Compensation	75,710.31
270 Group Insurance – Self-Insurance	262,221.82
<b>Total Personnel Services – Employee Benefits</b>	<b>\$5,820,861.28</b>
<b>300 <u>Purchased Professional and Technical Services</u></b>	
322 Professional Educational Services – Ius	521,392.35
324 Professional Educational Services – Employee Training and Development Services	2,245.00
329 Professional Educational Services – Other	198,104.31
330 Other Professional Services	185,316.50
<b>Total Purchased Professional and Technical Services</b>	<b>\$907,058.16</b>
<b>400 <u>Purchased Property Services</u></b>	
430 Repairs and Maintenance Services	2,268.66
440 Rentals	56,540.37
490 Other Purchased Property Services	662.00
<b>Total Purchased Property Services</b>	<b>\$59,471.03</b>
<b>500 <u>Other Purchased Services</u></b>	
510 Student Transportation Services	5,881.98
530 Communications	8,336.08
550 Printing and Binding	902.34
561 Tuition To Other School Districts Within the State	61,570.33
562 Tuition To Pennsylvania Charter Schools	1,419,448.59
564 Tuition To Career and Technology Centers	830,056.92
567 Tuition To Approved Private Schools (APS) and PA Chartered Schools for the Deaf and Blind	22,128.95
568 Tuition To Private Residential Rehabilitative Institutions (PRRI) [In-State] and Detention Centers	284,876.94
569 Tuition – Other	248,350.45
580 Travel	11,028.12
594 IU Payment By Withholding for Institutionalized Children's Programs – Special Classes	2,586.34
<b>Total Other Purchased Services</b>	<b>\$2,895,167.04</b>
<b>600 <u>Supplies</u></b>	
610 General Supplies	290,746.58
630 Food	10,687.61
640 Books and Periodicals	146,089.25
650 Supplies & Fees – Technology Related	69,437.19
<b>Total Supplies</b>	<b>\$516,960.63</b>

LEA : 116496503      Shamokin Area SD

Printed 11/18/2016 7:52:28 AM

<b>General Fund (10)</b>		
<b>1000 Instruction</b>		<b><u>Total</u></b>
<b>700 <u>Property</u></b>		
750 Equipment – Original and Additional	107,916.48	
760 Equipment – Replacement	8,899.00	
<b>Total Property</b>	<b>\$116,815.48</b>	
<b>800 <u>Other Objects</u></b>		
810 Dues and Fees	3,594.00	
890 Miscellaneous Expenditures	250.00	
<b>Total Other Objects</b>	<b>\$3,844.00</b>	
<b>Total 1000 Instruction</b>	<b>\$18,732,057.95</b>	

LEA : 116496503      Shamokin Area SD

Printed 11/18/2016 7:52:28 AM

<b>General Fund (10)</b>				
<b>1100 Regular Programs – Elementary / Secondary</b>	<b><u>Elementary</u></b>	<b><u>Secondary</u></b>	<b><u>Federal</u></b>	<b><u>Total</u></b>
<b>100 <u>Personnel Services – Salaries</u></b>				
100 Personnel Services – Salaries	2,612,659.44	2,601,137.78	639,918.62	5,853,715.84
<b>Total Personnel Services – Salaries</b>	<b>\$2,612,659.44</b>	<b>\$2,601,137.78</b>	<b>\$639,918.62</b>	<b>\$5,853,715.84</b>
<b>200 <u>Personnel Services – Employee Benefits</u></b>				
210 Group Insurance – Contracted Provider	845,870.53	814,229.62	184,041.25	1,844,141.40
220 Social Security Contributions	197,827.99	196,672.42	48,391.26	442,891.67
230 PSERS Retirement Contributions	668,694.90	682,934.67	165,262.79	1,516,892.36
240 Tuition Reimbursement	14,896.24	15,136.47		30,032.71
260 Workers' Compensation	23,513.94	23,413.57	5,759.18	52,686.69
270 Group Insurance – Self-Insurance	116,200.00	100,021.82		216,221.82
<b>Total Personnel Services – Employee Benefits</b>	<b>\$1,867,003.60</b>	<b>\$1,832,408.57</b>	<b>\$403,454.48</b>	<b>\$4,102,866.65</b>
<b>300 <u>Purchased Professional and Technical Services</u></b>				
324 Professional Educational Services – Employee Training and Development Services			980.00	980.00
329 Professional Educational Services – Other		64,508.50	56,902.84	121,411.34
330 Other Professional Services			6,250.00	6,250.00
<b>Total Purchased Professional and Technical Services</b>		<b>\$64,508.50</b>	<b>\$64,132.84</b>	<b>\$128,641.34</b>
<b>400 <u>Purchased Property Services</u></b>				
430 Repairs and Maintenance Services		1,939.50	329.16	2,268.66
440 Rentals	3,837.67	825.54	10.45	4,673.66
<b>Total Purchased Property Services</b>	<b>\$3,837.67</b>	<b>\$2,765.04</b>	<b>\$339.61</b>	<b>\$6,942.32</b>
<b>500 <u>Other Purchased Services</u></b>				
510 Student Transportation Services	648.60	3,755.46		4,404.06
530 Communications	74.09	488.18	333.80	896.07
550 Printing and Binding	445.08	457.26		902.34
562 Tuition To Pennsylvania Charter Schools	63,428.53	1,310,747.03		1,374,175.56
580 Travel	19.44	479.67	272.84	771.95
<b>Total Other Purchased Services</b>	<b>\$64,615.74</b>	<b>\$1,315,927.60</b>	<b>\$606.64</b>	<b>\$1,381,149.98</b>
<b>600 <u>Supplies</u></b>				
610 General Supplies	60,950.60	90,827.92	68,895.38	220,673.90
630 Food		36.00	53.00	89.00
640 Books and Periodicals	74,789.15	53,089.34	10,253.28	138,131.77
650 Supplies & Fees – Technology Related	3,256.00		39,745.34	43,001.34
<b>Total Supplies</b>	<b>\$138,995.75</b>	<b>\$143,953.26</b>	<b>\$118,947.00</b>	<b>\$401,896.01</b>
<b>700 <u>Property</u></b>				
750 Equipment – Original and Additional			58,904.31	58,904.31
760 Equipment – Replacement		8,899.00		8,899.00
<b>Total Property</b>		<b>\$8,899.00</b>	<b>\$58,904.31</b>	<b>\$67,803.31</b>
<b>800 <u>Other Objects</u></b>				
810 Dues and Fees		1,255.00		1,255.00
<b>Total Other Objects</b>		<b>\$1,255.00</b>		<b>\$1,255.00</b>
<b>Total 1100 Regular Programs – Elementary / Secondary</b>	<b>\$4,687,112.20</b>	<b>\$5,970,854.75</b>	<b>\$1,286,303.50</b>	<b>\$11,944,270.45</b>

LEA : 116496503      Shamokin Area SD

Printed 11/18/2016 7:52:28 AM

General Fund (10)

1110 Regular Programs	Elementary	Secondary	Federal	Total
<b>100 Personnel Services – Salaries</b>				
100 Personnel Services – Salaries	2,612,659.44	2,601,137.78	108,818.56	5,322,615.78
<b>Total Personnel Services – Salaries</b>	<b>\$2,612,659.44</b>	<b>\$2,601,137.78</b>	<b>\$108,818.56</b>	<b>\$5,322,615.78</b>
<b>200 Personnel Services – Employee Benefits</b>				
210 Group Insurance – Contracted Provider	845,870.53	814,229.62	29,686.71	1,689,786.86
220 Social Security Contributions	197,827.99	196,672.42	8,205.11	402,705.52
230 PSERS Retirement Contributions	668,694.90	682,934.67	28,025.70	1,379,655.27
240 Tuition Reimbursement	14,896.24	15,136.47		30,032.71
260 Workers' Compensation	23,513.94	23,413.57	979.33	47,906.84
270 Group Insurance – Self-Insurance	116,200.00	100,021.82		216,221.82
<b>Total Personnel Services – Employee Benefits</b>	<b>\$1,867,003.60</b>	<b>\$1,832,408.57</b>	<b>\$66,896.85</b>	<b>\$3,766,309.02</b>
<b>300 Purchased Professional and Technical Services</b>				
329 Professional Educational Services – Other		64,508.50		64,508.50
<b>Total Purchased Professional and Technical Services</b>		<b>\$64,508.50</b>		<b>\$64,508.50</b>
<b>400 Purchased Property Services</b>				
430 Repairs and Maintenance Services		1,939.50		1,939.50
440 Rentals	3,837.67	825.54		4,663.21
<b>Total Purchased Property Services</b>	<b>\$3,837.67</b>	<b>\$2,765.04</b>		<b>\$6,602.71</b>
<b>500 Other Purchased Services</b>				
510 Student Transportation Services	648.60	3,755.46		4,404.06
530 Communications	74.09	488.18		562.27
550 Printing and Binding	445.08	457.26		902.34
562 Tuition To Pennsylvania Charter Schools	63,428.53	1,310,747.03		1,374,175.56
580 Travel	19.44	479.67		499.11
<b>Total Other Purchased Services</b>	<b>\$64,615.74</b>	<b>\$1,315,927.60</b>		<b>\$1,380,543.34</b>
<b>600 Supplies</b>				
610 General Supplies	60,950.60	90,827.92	4,153.17	155,931.69
630 Food		36.00		36.00
640 Books and Periodicals	74,789.15	53,089.34	79.90	127,958.39
650 Supplies & Fees – Technology Related	3,256.00		11,733.34	14,989.34
<b>Total Supplies</b>	<b>\$138,995.75</b>	<b>\$143,953.26</b>	<b>\$15,966.41</b>	<b>\$298,915.42</b>
<b>700 Property</b>				
760 Equipment – Replacement		8,899.00		8,899.00
<b>Total Property</b>		<b>\$8,899.00</b>		<b>\$8,899.00</b>
<b>800 Other Objects</b>				
810 Dues and Fees		1,255.00		1,255.00
<b>Total Other Objects</b>		<b>\$1,255.00</b>		<b>\$1,255.00</b>
<b>Total 1110 Regular Programs</b>	<b>\$4,687,112.20</b>	<b>\$5,970,854.75</b>	<b>\$191,681.82</b>	<b>\$10,849,648.77</b>

LEA : 116496503      Shamokin Area SD

Printed 11/18/2016 7:52:28 AM

General Fund (10)					
1190 Federally-Funded Regular Programs		Elementary	Secondary	Federal	Total
100 <u>Personnel Services – Salaries</u>					
100 Personnel Services – Salaries				531,100.06	531,100.06
Total Personnel Services – Salaries				\$531,100.06	\$531,100.06
200 <u>Personnel Services – Employee Benefits</u>					
210 Group Insurance – Contracted Provider				154,354.54	154,354.54
220 Social Security Contributions				40,186.15	40,186.15
230 PSERS Retirement Contributions				137,237.09	137,237.09
260 Workers' Compensation				4,779.85	4,779.85
Total Personnel Services – Employee Benefits				\$336,557.63	\$336,557.63
300 <u>Purchased Professional and Technical Services</u>					
324 Professional Educational Services – Employee Training and Development Services				980.00	980.00
329 Professional Educational Services – Other				56,902.84	56,902.84
330 Other Professional Services				6,250.00	6,250.00
Total Purchased Professional and Technical Services				\$64,132.84	\$64,132.84
400 <u>Purchased Property Services</u>					
430 Repairs and Maintenance Services				329.16	329.16
440 Rentals				10.45	10.45
Total Purchased Property Services				\$339.61	\$339.61
500 <u>Other Purchased Services</u>					
530 Communications				333.80	333.80
580 Travel				272.84	272.84
Total Other Purchased Services				\$606.64	\$606.64
600 <u>Supplies</u>					
610 General Supplies				64,742.21	64,742.21
630 Food				53.00	53.00
640 Books and Periodicals				10,173.38	10,173.38
650 Supplies & Fees – Technology Related				28,012.00	28,012.00
Total Supplies				\$102,980.59	\$102,980.59
700 <u>Property</u>					
750 Equipment – Original and Additional				58,904.31	58,904.31
Total Property				\$58,904.31	\$58,904.31
Total 1190 Federally-Funded Regular Programs				\$1,094,621.68	\$1,094,621.68



LEA : 116496503      Shamokin Area SD

Printed 11/18/2016 7:52:28 AM

General Fund (10)

1200 Special Programs – Elementary / Secondary

	Elementary	Secondary	Federal	Total
<b>100 Personnel Services – Salaries</b>				
100 Personnel Services – Salaries	781,958.99	913,656.06	84,252.91	1,779,867.96
<b>Total Personnel Services – Salaries</b>	<b>\$781,958.99</b>	<b>\$913,656.06</b>	<b>\$84,252.91</b>	<b>\$1,779,867.96</b>
<b>200 Personnel Services – Employee Benefits</b>				
210 Group Insurance – Contracted Provider	202,394.20	250,069.19	32,871.58	485,334.97
220 Social Security Contributions	59,252.06	69,303.25	6,381.75	134,937.06
230 PSERS Retirement Contributions	201,737.21	235,187.38	21,797.61	458,722.20
240 Tuition Reimbursement	14,238.00	16,599.50		30,837.50
250 Unemployment Compensation	(12.16)	283.35	25.21	296.40
260 Workers' Compensation	7,037.85	8,222.97	758.33	16,019.15
270 Group Insurance – Self-Insurance		40,000.00		40,000.00
<b>Total Personnel Services – Employee Benefits</b>	<b>\$484,647.16</b>	<b>\$619,665.64</b>	<b>\$61,834.48</b>	<b>\$1,166,147.28</b>
<b>300 Purchased Professional and Technical Services</b>				
322 Professional Educational Services – Ius	94,556.14	102,568.56	324,267.65	521,392.35
324 Professional Educational Services – Employee Training and Development Services	800.00	450.00		1,250.00
329 Professional Educational Services – Other	57,404.73	1,000.00		58,404.73
330 Other Professional Services	177,762.50	1,304.00		179,066.50
<b>Total Purchased Professional and Technical Services</b>	<b>\$330,523.37</b>	<b>\$105,322.56</b>	<b>\$324,267.65</b>	<b>\$760,113.58</b>
<b>400 Purchased Property Services</b>				
440 Rentals		42,328.39		42,328.39
490 Other Purchased Property Services		662.00		662.00
<b>Total Purchased Property Services</b>		<b>\$42,990.39</b>		<b>\$42,990.39</b>
<b>500 Other Purchased Services</b>				
510 Student Transportation Services	535.16	771.02		1,306.18
530 Communications	3,341.57	3,960.00		7,301.57
561 Tuition To Other School Districts Within the State		9,008.78		9,008.78
562 Tuition To Pennsylvania Charter Schools	10,495.74	34,777.29		45,273.03
567 Tuition To Approved Private Schools (APS) and PA Chartered Schools for the Deaf and Blind		22,128.95		22,128.95
568 Tuition To Private Residential Rehabilitative Institutions (PRRI) [In-State] and Detention Centers	4,980.00	132,942.53		137,922.53
569 Tuition – Other	202,750.25	45,600.20		248,350.45
580 Travel	10,161.28			10,161.28
594 IU Payment By Withholding for Institutionalized Children's Programs – Special Classes		2,586.34		2,586.34
<b>Total Other Purchased Services</b>	<b>\$232,264.00</b>	<b>\$251,775.11</b>		<b>\$484,039.11</b>
<b>600 Supplies</b>				
610 General Supplies	2,400.27	5,729.69	11,308.53	19,438.49
630 Food		33.06		33.06
640 Books and Periodicals	5,304.41	1,219.55		6,523.96
650 Supplies & Fees – Technology Related	12,056.00	14,064.00		26,120.00
<b>Total Supplies</b>	<b>\$19,760.68</b>	<b>\$21,046.30</b>	<b>\$11,308.53</b>	<b>\$52,115.51</b>
<b>700 Property</b>				
750 Equipment – Original and Additional	379.00	6,523.53	5,260.64	12,163.17
<b>Total Property</b>	<b>\$379.00</b>	<b>\$6,523.53</b>	<b>\$5,260.64</b>	<b>\$12,163.17</b>

LEA : 116496503     Shamokin Area SD

Printed 11/18/2016 7:52:28 AM

General Fund (10)

1200 Special Programs – Elementary / Secondary	<u>Elementary</u>	<u>Secondary</u>	<u>Federal</u>	<u>Total</u>
800 <u>Other Objects</u>				
810 Dues and Fees	326.00	598.00		924.00
890 Miscellaneous Expenditures		250.00		250.00
Total Other Objects	\$326.00	\$848.00		\$1,174.00
Total 1200 Special Programs – Elementary / Secondary	\$1,849,859.20	\$1,961,827.59	\$486,924.21	\$4,298,611.00

LEA : 116496503      Shamokin Area SD

Printed 11/18/2016 7:52:28 AM

General Fund (10)

1210 Life Skills Support

	Elementary	Secondary	Federal	Total
<b>100 Personnel Services – Salaries</b>				
100 Personnel Services – Salaries	191,506.29	66,955.84		258,462.13
<b>Total Personnel Services – Salaries</b>	<b>\$191,506.29</b>	<b>\$66,955.84</b>		<b>\$258,462.13</b>
<b>200 Personnel Services – Employee Benefits</b>				
210 Group Insurance – Contracted Provider	55,436.10	24,108.36		79,544.46
220 Social Security Contributions	14,517.69	5,046.70		19,564.39
230 PSERS Retirement Contributions	49,164.85	17,301.54		66,466.39
240 Tuition Reimbursement	147.00			147.00
260 Workers' Compensation	1,723.59	602.63		2,326.22
270 Group Insurance – Self-Insurance		6,000.00		6,000.00
<b>Total Personnel Services – Employee Benefits</b>	<b>\$120,989.23</b>	<b>\$53,059.23</b>		<b>\$174,048.46</b>
<b>300 Purchased Professional and Technical Services</b>				
322 Professional Educational Services – Ius			119,930.22	119,930.22
324 Professional Educational Services – Employee Training and Development Services	200.00	50.00		250.00
<b>Total Purchased Professional and Technical Services</b>	<b>\$200.00</b>	<b>\$50.00</b>	<b>\$119,930.22</b>	<b>\$120,180.22</b>
<b>600 Supplies</b>				
610 General Supplies	370.80	179.04	3,605.93	4,155.77
640 Books and Periodicals	3,705.77			3,705.77
<b>Total Supplies</b>	<b>\$4,076.57</b>	<b>\$179.04</b>	<b>\$3,605.93</b>	<b>\$7,861.54</b>
<b>Total 1210 Life Skills Support</b>	<b>\$316,772.09</b>	<b>\$120,244.11</b>	<b>\$123,536.15</b>	<b>\$560,552.35</b>

LEA : 116496503      Shamokin Area SD

Printed 11/18/2016 7:52:28 AM

<b>General Fund (10)</b>				
<b>1220 Sensory Support</b>	<u>Elementary</u>	<u>Secondary</u>	<u>Federal</u>	<u>Total</u>
<b>100 <u>Personnel Services – Salaries</u></b>				
100 Personnel Services – Salaries		139,115.00		139,115.00
<b>Total Personnel Services – Salaries</b>		<b>\$139,115.00</b>		<b>\$139,115.00</b>
<b>200 <u>Personnel Services – Employee Benefits</u></b>				
210 Group Insurance – Contracted Provider		51,034.74		51,034.74
220 Social Security Contributions		10,519.53		10,519.53
230 PSERS Retirement Contributions		35,947.33		35,947.33
260 Workers' Compensation		1,252.08		1,252.08
270 Group Insurance – Self-Insurance		6,000.00		6,000.00
<b>Total Personnel Services – Employee Benefits</b>		<b>\$104,753.68</b>		<b>\$104,753.68</b>
<b>300 <u>Purchased Professional and Technical Services</u></b>				
322 Professional Educational Services – Ius	80,727.89	37,301.81	38,029.76	156,059.46
324 Professional Educational Services – Employee Training and Development Services	400.00			400.00
329 Professional Educational Services – Other	57,404.73			57,404.73
<b>Total Purchased Professional and Technical Services</b>	<b>\$138,532.62</b>	<b>\$37,301.81</b>	<b>\$38,029.76</b>	<b>\$213,864.19</b>
<b>500 <u>Other Purchased Services</u></b>				
530 Communications	26.49			26.49
568 Tuition To Private Residential Rehabilitative Institutions (PRRI) [In-State] and Detention Centers		180.00		180.00
<b>Total Other Purchased Services</b>	<b>\$26.49</b>	<b>\$180.00</b>		<b>\$206.49</b>
<b>600 <u>Supplies</u></b>				
610 General Supplies	359.18			359.18
<b>Total Supplies</b>	<b>\$359.18</b>			<b>\$359.18</b>
<b>700 <u>Property</u></b>				
750 Equipment – Original and Additional			1,728.39	1,728.39
<b>Total Property</b>			<b>\$1,728.39</b>	<b>\$1,728.39</b>
<b>800 <u>Other Objects</u></b>				
810 Dues and Fees	296.00			296.00
<b>Total Other Objects</b>	<b>\$296.00</b>			<b>\$296.00</b>
<b>Total 1220 Sensory Support</b>	<b>\$139,214.29</b>	<b>\$281,350.49</b>	<b>\$39,758.15</b>	<b>\$460,322.93</b>

LEA : 116496503      Shamokin Area SD

Printed 11/18/2016 7:52:28 AM

General Fund (10)

1230 Emotional Support	Elementary	Secondary	Federal	Total
100 <u>Personnel Services – Salaries</u>				
100 Personnel Services – Salaries	150,478.88	177,532.97	3,354.23	331,366.08
<b>Total Personnel Services – Salaries</b>	<b>\$150,478.88</b>	<b>\$177,532.97</b>	<b>\$3,354.23</b>	<b>\$331,366.08</b>
200 <u>Personnel Services – Employee Benefits</u>				
210 Group Insurance – Contracted Provider	42,179.78	37,842.36		80,022.14
220 Social Security Contributions	11,425.66	13,472.21	256.58	25,154.45
230 PSERS Retirement Contributions	38,883.80	45,491.89	866.74	85,242.43
240 Tuition Reimbursement	3,361.00	4,944.00		8,305.00
260 Workers' Compensation	1,354.32	1,597.66	30.20	2,982.18
<b>Total Personnel Services – Employee Benefits</b>	<b>\$97,204.56</b>	<b>\$103,348.12</b>	<b>\$1,153.52</b>	<b>\$201,706.20</b>
300 <u>Purchased Professional and Technical Services</u>				
322 Professional Educational Services – lus		12,742.83	26,562.01	39,304.84
324 Professional Educational Services – Employee Training and Development Services	200.00	25.00		225.00
330 Other Professional Services	177,762.50			177,762.50
<b>Total Purchased Professional and Technical Services</b>	<b>\$177,962.50</b>	<b>\$12,767.83</b>	<b>\$26,562.01</b>	<b>\$217,292.34</b>
500 <u>Other Purchased Services</u>				
530 Communications	15.08			15.08
561 Tuition To Other School Districts Within the State		9,008.78		9,008.78
568 Tuition To Private Residential Rehabilitative Institutions (PRRI) [In-State] and Detention Centers	4,980.00	420.00		5,400.00
569 Tuition – Other	202,750.25	45,600.20		248,350.45
580 Travel	10,038.16			10,038.16
<b>Total Other Purchased Services</b>	<b>\$217,783.49</b>	<b>\$55,028.98</b>		<b>\$272,812.47</b>
600 <u>Supplies</u>				
610 General Supplies	552.58	291.44	3,721.81	4,565.83
630 Food		33.06		33.06
640 Books and Periodicals	1,413.96	284.85		1,698.81
<b>Total Supplies</b>	<b>\$1,966.54</b>	<b>\$609.35</b>	<b>\$3,721.81</b>	<b>\$6,297.70</b>
<b>Total 1230 Emotional Support</b>	<b>\$645,395.97</b>	<b>\$349,287.25</b>	<b>\$34,791.57</b>	<b>\$1,029,474.79</b>

LEA : 116496503      Shamokin Area SD

Printed 11/18/2016 7:52:28 AM

General Fund (10)

1240 Academic Support	Elementary	Secondary	Federal	Total
<b>100 Personnel Services – Salaries</b>				
100 Personnel Services – Salaries	405,832.24	343,439.11	1,795.01	751,066.36
<b>Total Personnel Services – Salaries</b>	<b>\$405,832.24</b>	<b>\$343,439.11</b>	<b>\$1,795.01</b>	<b>\$751,066.36</b>
<b>200 Personnel Services – Employee Benefits</b>				
210 Group Insurance – Contracted Provider	97,081.36	93,537.37		190,618.73
220 Social Security Contributions	30,717.17	26,061.15	137.31	56,915.63
230 PSERS Retirement Contributions	104,866.55	88,304.16	463.82	193,634.53
240 Tuition Reimbursement	10,730.00	5,031.50		15,761.50
250 Unemployment Compensation		296.40		296.40
260 Workers' Compensation	3,652.56	3,091.10	16.17	6,759.83
270 Group Insurance – Self-Insurance		28,000.00		28,000.00
<b>Total Personnel Services – Employee Benefits</b>	<b>\$247,047.64</b>	<b>\$244,321.68</b>	<b>\$617.30</b>	<b>\$491,986.62</b>
<b>300 Purchased Professional and Technical Services</b>				
322 Professional Educational Services – Ius	806.92			806.92
324 Professional Educational Services – Employee Training and Development Services		150.00		150.00
329 Professional Educational Services – Other		1,000.00		1,000.00
330 Other Professional Services		1,304.00		1,304.00
<b>Total Purchased Professional and Technical Services</b>	<b>\$806.92</b>	<b>\$2,454.00</b>		<b>\$3,260.92</b>
<b>400 Purchased Property Services</b>				
440 Rentals		5,513.24		5,513.24
490 Other Purchased Property Services		662.00		662.00
<b>Total Purchased Property Services</b>		<b>\$6,175.24</b>		<b>\$6,175.24</b>
<b>500 Other Purchased Services</b>				
510 Student Transportation Services		524.56		524.56
530 Communications	3,300.00	3,960.00		7,260.00
562 Tuition To Pennsylvania Charter Schools	10,495.74	34,777.29		45,273.03
580 Travel	123.12			123.12
<b>Total Other Purchased Services</b>	<b>\$13,918.86</b>	<b>\$39,261.85</b>		<b>\$53,180.71</b>
<b>600 Supplies</b>				
610 General Supplies	299.00	4,642.81	3,920.80	8,862.61
640 Books and Periodicals	184.68	934.70		1,119.38
650 Supplies & Fees – Technology Related	11,458.00	13,466.00		24,924.00
<b>Total Supplies</b>	<b>\$11,941.68</b>	<b>\$19,043.51</b>	<b>\$3,920.80</b>	<b>\$34,905.99</b>
<b>700 Property</b>				
750 Equipment – Original and Additional	379.00	6,140.14	3,211.56	9,730.70
<b>Total Property</b>	<b>\$379.00</b>	<b>\$6,140.14</b>	<b>\$3,211.56</b>	<b>\$9,730.70</b>
<b>800 Other Objects</b>				
810 Dues and Fees	30.00	598.00		628.00
890 Miscellaneous Expenditures		250.00		250.00
<b>Total Other Objects</b>	<b>\$30.00</b>	<b>\$848.00</b>		<b>\$878.00</b>
<b>Total 1240 Academic Support</b>	<b>\$679,956.34</b>	<b>\$661,683.53</b>	<b>\$9,544.67</b>	<b>\$1,351,184.54</b>

LEA : 116496503      Shamokin Area SD

Printed 11/18/2016 7:52:28 AM

General Fund (10)

1241 Learning Support – Public	Elementary	Secondary	Federal	Total
<b>100 Personnel Services – Salaries</b>				
100 Personnel Services – Salaries	405,832.24	343,439.11	1,795.01	751,066.36
<b>Total Personnel Services – Salaries</b>	<b>\$405,832.24</b>	<b>\$343,439.11</b>	<b>\$1,795.01</b>	<b>\$751,066.36</b>
<b>200 Personnel Services – Employee Benefits</b>				
210 Group Insurance – Contracted Provider	97,081.36	93,537.37		190,618.73
220 Social Security Contributions	30,717.17	26,061.15	137.31	56,915.63
230 PSERS Retirement Contributions	104,866.55	88,304.16	463.82	193,634.53
240 Tuition Reimbursement	10,730.00	5,031.50		15,761.50
250 Unemployment Compensation		296.40		296.40
260 Workers' Compensation	3,652.56	3,091.10	16.17	6,759.83
270 Group Insurance – Self-Insurance		28,000.00		28,000.00
<b>Total Personnel Services – Employee Benefits</b>	<b>\$247,047.64</b>	<b>\$244,321.68</b>	<b>\$617.30</b>	<b>\$491,986.62</b>
<b>300 Purchased Professional and Technical Services</b>				
322 Professional Educational Services – Ius	806.92			806.92
324 Professional Educational Services – Employee Training and Development Services		150.00		150.00
329 Professional Educational Services – Other		1,000.00		1,000.00
330 Other Professional Services		1,304.00		1,304.00
<b>Total Purchased Professional and Technical Services</b>	<b>\$806.92</b>	<b>\$2,454.00</b>		<b>\$3,260.92</b>
<b>400 Purchased Property Services</b>				
440 Rentals		5,513.24		5,513.24
490 Other Purchased Property Services		662.00		662.00
<b>Total Purchased Property Services</b>		<b>\$6,175.24</b>		<b>\$6,175.24</b>
<b>500 Other Purchased Services</b>				
510 Student Transportation Services		524.56		524.56
530 Communications	3,300.00	3,960.00		7,260.00
562 Tuition To Pennsylvania Charter Schools	10,495.74	34,777.29		45,273.03
580 Travel	123.12			123.12
<b>Total Other Purchased Services</b>	<b>\$13,918.86</b>	<b>\$39,261.85</b>		<b>\$53,180.71</b>
<b>600 Supplies</b>				
610 General Supplies	99.00	4,642.81	3,920.80	8,662.61
640 Books and Periodicals		934.70		934.70
650 Supplies & Fees – Technology Related	11,458.00	13,466.00		24,924.00
<b>Total Supplies</b>	<b>\$11,557.00</b>	<b>\$19,043.51</b>	<b>\$3,920.80</b>	<b>\$34,521.31</b>
<b>700 Property</b>				
750 Equipment – Original and Additional	379.00	6,140.14	3,211.56	9,730.70
<b>Total Property</b>	<b>\$379.00</b>	<b>\$6,140.14</b>	<b>\$3,211.56</b>	<b>\$9,730.70</b>
<b>800 Other Objects</b>				
810 Dues and Fees		598.00		598.00
890 Miscellaneous Expenditures		250.00		250.00
<b>Total Other Objects</b>		<b>\$848.00</b>		<b>\$848.00</b>
<b>Total 1241 Learning Support – Public</b>	<b>\$679,541.66</b>	<b>\$661,683.53</b>	<b>\$9,544.67</b>	<b>\$1,350,769.86</b>

LEA : 116496503     Shamokin Area SD

Printed 11/18/2016 7:52:28 AM

General Fund (10)

1243 Gifted Support

	<u>Elementary</u>	<u>Secondary</u>	<u>Federal</u>	<u>Total</u>
<b>600 <u>Supplies</u></b>				
610 General Supplies	200.00			200.00
640 Books and Periodicals	184.68			184.68
<b>Total Supplies</b>	<b>\$384.68</b>			<b>\$384.68</b>
<b>800 <u>Other Objects</u></b>				
810 Dues and Fees	30.00			30.00
<b>Total Other Objects</b>	<b>\$30.00</b>			<b>\$30.00</b>
<b>Total 1243 Gifted Support</b>	<b>\$414.68</b>			<b>\$414.68</b>



LEA : 116496503      Shamokin Area SD

Printed 11/18/2016 7:52:28 AM

General Fund (10)

1260 Physical Support	<u>Elementary</u>	<u>Secondary</u>	<u>Federal</u>	<u>Total</u>
<b>300 <u>Purchased Professional and Technical Services</u></b> 322 Professional Educational Services – lus	11,391.05	4,114.50		15,505.55
<b>Total Purchased Professional and Technical Services</b>	<b>\$11,391.05</b>	<b>\$4,114.50</b>		<b>\$15,505.55</b>
<b>500 <u>Other Purchased Services</u></b> 510 Student Transportation Services	212.10			212.10
<b>Total Other Purchased Services</b>	<b>\$212.10</b>			<b>\$212.10</b>
<b>Total 1260 Physical Support</b>	<b>\$11,603.15</b>	<b>\$4,114.50</b>		<b>\$15,717.65</b>

LEA : 116496503      Shamokin Area SD

Printed 11/18/2016 7:52:28 AM

General Fund (10)

1270 Multi-Handicapped Support	<u>Elementary</u>	<u>Secondary</u>	<u>Federal</u>	<u>Total</u>
100 <u>Personnel Services – Salaries</u>				
100 Personnel Services – Salaries	34,141.58	47,831.93	79,103.67	161,077.18
<b>Total Personnel Services – Salaries</b>	<b>\$34,141.58</b>	<b>\$47,831.93</b>	<b>\$79,103.67</b>	<b>\$161,077.18</b>
200 <u>Personnel Services – Employee Benefits</u>				
210 Group Insurance – Contracted Provider	7,696.96	(127.95)	32,871.58	40,440.59
220 Social Security Contributions	2,591.54	3,653.32	5,987.86	12,232.72
230 PSERS Retirement Contributions	8,822.01	12,359.75	20,467.05	41,648.81
250 Unemployment Compensation	(12.16)	(10.20)	25.21	2.85
260 Workers' Compensation	307.38	430.50	711.96	1,449.84
<b>Total Personnel Services – Employee Benefits</b>	<b>\$19,405.73</b>	<b>\$16,305.42</b>	<b>\$60,063.66</b>	<b>\$95,774.81</b>
300 <u>Purchased Professional and Technical Services</u>				
322 Professional Educational Services – lus			132,465.61	132,465.61
324 Professional Educational Services – Employee Training and Development Services		25.00		25.00
<b>Total Purchased Professional and Technical Services</b>		<b>\$25.00</b>	<b>\$132,465.61</b>	<b>\$132,490.61</b>
500 <u>Other Purchased Services</u>				
510 Student Transportation Services	323.06	246.46		569.52
<b>Total Other Purchased Services</b>	<b>\$323.06</b>	<b>\$246.46</b>		<b>\$569.52</b>
600 <u>Supplies</u>				
610 General Supplies	818.71	616.40	59.99	1,495.10
650 Supplies & Fees – Technology Related	598.00	598.00		1,196.00
<b>Total Supplies</b>	<b>\$1,416.71</b>	<b>\$1,214.40</b>	<b>\$59.99</b>	<b>\$2,691.10</b>
700 <u>Property</u>				
750 Equipment – Original and Additional		383.39	320.69	704.08
<b>Total Property</b>		<b>\$383.39</b>	<b>\$320.69</b>	<b>\$704.08</b>
<b>Total 1270 Multi-Handicapped Support</b>	<b>\$55,287.08</b>	<b>\$66,006.60</b>	<b>\$272,013.62</b>	<b>\$393,307.30</b>

LEA : 116496503      Shamokin Area SD

Printed 11/18/2016 7:52:28 AM

<b>General Fund (10)</b>				
<b>1290 Special Programs - Other Support</b>	<b><u>Elementary</u></b>	<b><u>Secondary</u></b>	<b><u>Federal</u></b>	<b><u>Total</u></b>
<b>100 <u>Personnel Services – Salaries</u></b>				
100 Personnel Services – Salaries		138,781.21		138,781.21
<b>Total Personnel Services – Salaries</b>		<b>\$138,781.21</b>		<b>\$138,781.21</b>
<b>200 <u>Personnel Services – Employee Benefits</u></b>				
210 Group Insurance – Contracted Provider		43,674.31		43,674.31
220 Social Security Contributions		10,550.34		10,550.34
230 PSERS Retirement Contributions		35,782.71		35,782.71
240 Tuition Reimbursement		6,624.00		6,624.00
250 Unemployment Compensation		(2.85)		(2.85)
260 Workers' Compensation		1,249.00		1,249.00
<b>Total Personnel Services – Employee Benefits</b>		<b>\$97,877.51</b>		<b>\$97,877.51</b>
<b>300 <u>Purchased Professional and Technical Services</u></b>				
322 Professional Educational Services – Ius	1,630.28	48,409.42	7,280.05	57,319.75
324 Professional Educational Services – Employee Training and Development Services		200.00		200.00
<b>Total Purchased Professional and Technical Services</b>	<b>\$1,630.28</b>	<b>\$48,609.42</b>	<b>\$7,280.05</b>	<b>\$57,519.75</b>
<b>400 <u>Purchased Property Services</u></b>				
440 Rentals		36,815.15		36,815.15
<b>Total Purchased Property Services</b>		<b>\$36,815.15</b>		<b>\$36,815.15</b>
<b>500 <u>Other Purchased Services</u></b>				
567 Tuition To Approved Private Schools (APS) and PA Chartered Schools for the Deaf and Blind		22,128.95		22,128.95
568 Tuition To Private Residential Rehabilitative Institutions (PRRI) [In-State] and Detention Centers		132,342.53		132,342.53
594 IU Payment By Withholding for Institutionalized Children's Programs – Special Classes		2,586.34		2,586.34
<b>Total Other Purchased Services</b>		<b>\$157,057.82</b>		<b>\$157,057.82</b>
<b>Total 1290 Special Programs - Other Support</b>	<b>\$1,630.28</b>	<b>\$479,141.11</b>	<b>\$7,280.05</b>	<b>\$488,051.44</b>

LEA : 116496503      Shamokin Area SD

Printed 11/18/2016 7:52:28 AM

General Fund (10)				
1300 Vocational Education	<u>Elementary</u>	<u>Secondary</u>	<u>Federal</u>	<u>Total</u>
100 <u>Personnel Services – Salaries</u>				
100 Personnel Services – Salaries		343,585.62		343,585.62
<b>Total Personnel Services – Salaries</b>		<b>\$343,585.62</b>		<b>\$343,585.62</b>
200 <u>Personnel Services – Employee Benefits</u>				
210 Group Insurance – Contracted Provider		109,916.12		109,916.12
220 Social Security Contributions		26,008.82		26,008.82
230 PSERS Retirement Contributions		88,772.22		88,772.22
260 Workers' Compensation		3,092.11		3,092.11
<b>Total Personnel Services – Employee Benefits</b>		<b>\$227,789.27</b>		<b>\$227,789.27</b>
500 <u>Other Purchased Services</u>				
530 Communications		138.44		138.44
564 Tuition To Career and Technology Centers		830,056.92		830,056.92
580 Travel		94.89		94.89
<b>Total Other Purchased Services</b>		<b>\$830,290.25</b>		<b>\$830,290.25</b>
600 <u>Supplies</u>				
610 General Supplies		29,536.99		29,536.99
<b>Total Supplies</b>		<b>\$29,536.99</b>		<b>\$29,536.99</b>
700 <u>Property</u>				
750 Equipment – Original and Additional		799.00		799.00
<b>Total Property</b>		<b>\$799.00</b>		<b>\$799.00</b>
<b>Total 1300 Vocational Education</b>		<b>\$1,432,001.13</b>		<b>\$1,432,001.13</b>

LEA : 116496503      Shamokin Area SD

Printed 11/18/2016 7:52:28 AM

General Fund (10)

1400 Other Instructional Programs – Elementary / Secondary	Elementary	Secondary	Federal	Total
100 <u>Personnel Services – Salaries</u>				
100 Personnel Services – Salaries		316,693.41	30,350.00	347,043.41
<b>Total Personnel Services – Salaries</b>		<b>\$316,693.41</b>	<b>\$30,350.00</b>	<b>\$347,043.41</b>
200 <u>Personnel Services – Employee Benefits</u>				
210 Group Insurance – Contracted Provider		122,627.14		122,627.14
220 Social Security Contributions		23,998.81	2,322.25	26,321.06
230 PSERS Retirement Contributions		81,259.88	7,842.46	89,102.34
240 Tuition Reimbursement		4,230.00		4,230.00
250 Unemployment Compensation		13,565.00		13,565.00
260 Workers' Compensation		2,850.03	273.34	3,123.37
<b>Total Personnel Services – Employee Benefits</b>		<b>\$248,530.86</b>	<b>\$10,438.05</b>	<b>\$258,968.91</b>
400 <u>Purchased Property Services</u>				
440 Rentals		9,538.32		9,538.32
<b>Total Purchased Property Services</b>		<b>\$9,538.32</b>		<b>\$9,538.32</b>
500 <u>Other Purchased Services</u>				
561 Tuition To Other School Districts Within the State	26,280.00	26,281.55		52,561.55
568 Tuition To Private Residential Rehabilitative Institutions (PRRI) [In-State] and Detention Centers	17,969.50	128,984.91		146,954.41
<b>Total Other Purchased Services</b>	<b>\$44,249.50</b>	<b>\$155,266.46</b>		<b>\$199,515.96</b>
600 <u>Supplies</u>				
640 Books and Periodicals		209.85	806.52	1,016.37
<b>Total Supplies</b>		<b>\$209.85</b>	<b>\$806.52</b>	<b>\$1,016.37</b>
800 <u>Other Objects</u>				
810 Dues and Fees		800.00		800.00
<b>Total Other Objects</b>		<b>\$800.00</b>		<b>\$800.00</b>
<b>Total 1400 Other Instructional Programs – Elementary / Secondary</b>	<b>\$44,249.50</b>	<b>\$731,038.90</b>	<b>\$41,594.57</b>	<b>\$816,882.97</b>

LEA : 116496503      Shamokin Area SD

Printed 11/18/2016 7:52:28 AM

General Fund (10)

1420 Summer School

	<u>Elementary</u>	<u>Secondary</u>	<u>Federal</u>	<u>Total</u>
<b>100 <u>Personnel Services – Salaries</u></b>				
100 Personnel Services – Salaries		9,953.00		9,953.00
<b>Total Personnel Services – Salaries</b>		<b>\$9,953.00</b>		<b>\$9,953.00</b>
<b>200 <u>Personnel Services – Employee Benefits</u></b>				
220 Social Security Contributions		761.35		761.35
230 PSERS Retirement Contributions		2,571.85		2,571.85
260 Workers’ Compensation		89.55		89.55
<b>Total Personnel Services – Employee Benefits</b>		<b>\$3,422.75</b>		<b>\$3,422.75</b>
<b>Total 1420 Summer School</b>		<b>\$13,375.75</b>		<b>\$13,375.75</b>

LEA : 116496503      Shamokin Area SD

Printed 11/18/2016 7:52:28 AM

General Fund (10)

1430 Homebound Instruction	<u>Elementary</u>	<u>Secondary</u>	<u>Federal</u>	<u>Total</u>
<b>100 <u>Personnel Services – Salaries</u></b>				
100 Personnel Services – Salaries		4,509.38		4,509.38
<b>Total Personnel Services – Salaries</b>		<b>\$4,509.38</b>		<b>\$4,509.38</b>
<b>200 <u>Personnel Services – Employee Benefits</u></b>				
220 Social Security Contributions		344.95		344.95
230 PSERS Retirement Contributions		1,165.20		1,165.20
260 Workers’ Compensation		40.63		40.63
<b>Total Personnel Services – Employee Benefits</b>		<b>\$1,550.78</b>		<b>\$1,550.78</b>
<b>500 <u>Other Purchased Services</u></b>				
568 Tuition To Private Residential Rehabilitative Institutions (PRRI) [In-State] and Detention Centers	405.00			405.00
<b>Total Other Purchased Services</b>	<b>\$405.00</b>			<b>\$405.00</b>
<b>Total 1430 Homebound Instruction</b>	<b>\$405.00</b>	<b>\$6,060.16</b>		<b>\$6,465.16</b>

LEA : 116496503      Shamokin Area SD

Printed 11/18/2016 7:52:28 AM

General Fund (10)

1440 Alternative Regular Education Programs	Elementary	Secondary	Federal	Total
<b>100 Personnel Services – Salaries</b>				
100 Personnel Services – Salaries		302,231.03		302,231.03
<b>Total Personnel Services – Salaries</b>		<b>\$302,231.03</b>		<b>\$302,231.03</b>
<b>200 Personnel Services – Employee Benefits</b>				
210 Group Insurance – Contracted Provider		122,627.14		122,627.14
220 Social Security Contributions		22,892.51		22,892.51
230 PSERS Retirement Contributions		77,522.83		77,522.83
240 Tuition Reimbursement		4,230.00		4,230.00
250 Unemployment Compensation		13,565.00		13,565.00
260 Workers' Compensation		2,719.85		2,719.85
<b>Total Personnel Services – Employee Benefits</b>		<b>\$243,557.33</b>		<b>\$243,557.33</b>
<b>400 Purchased Property Services</b>				
440 Rentals		9,538.32		9,538.32
<b>Total Purchased Property Services</b>		<b>\$9,538.32</b>		<b>\$9,538.32</b>
<b>500 Other Purchased Services</b>				
561 Tuition To Other School Districts Within the State	26,280.00	26,281.55		52,561.55
568 Tuition To Private Residential Rehabilitative Institutions (PRRI) [In-State] and Detention Centers	17,564.50	128,984.91		146,549.41
<b>Total Other Purchased Services</b>	<b>\$43,844.50</b>	<b>\$155,266.46</b>		<b>\$199,110.96</b>
<b>600 Supplies</b>				
640 Books and Periodicals		209.85	806.52	1,016.37
<b>Total Supplies</b>		<b>\$209.85</b>	<b>\$806.52</b>	<b>\$1,016.37</b>
<b>800 Other Objects</b>				
810 Dues and Fees		800.00		800.00
<b>Total Other Objects</b>		<b>\$800.00</b>		<b>\$800.00</b>
<b>Total 1440 Alternative Regular Education Programs</b>	<b>\$43,844.50</b>	<b>\$711,602.99</b>	<b>\$806.52</b>	<b>\$756,254.01</b>



LEA : 116496503      Shamokin Area SD

Printed 11/18/2016 7:52:28 AM

General Fund (10)

1441 Adjudicated / Court-Placed Programs	Elementary	Secondary	Federal	Total
100 <u>Personnel Services – Salaries</u>				
100 Personnel Services – Salaries		216,298.94		216,298.94
<b>Total Personnel Services – Salaries</b>		<b>\$216,298.94</b>		<b>\$216,298.94</b>
200 <u>Personnel Services – Employee Benefits</u>				
210 Group Insurance – Contracted Provider		85,578.15		85,578.15
220 Social Security Contributions		16,402.42		16,402.42
230 PSERS Retirement Contributions		55,318.09		55,318.09
240 Tuition Reimbursement		4,230.00		4,230.00
250 Unemployment Compensation		13,565.00		13,565.00
260 Workers' Compensation		1,946.64		1,946.64
<b>Total Personnel Services – Employee Benefits</b>		<b>\$177,040.30</b>		<b>\$177,040.30</b>
400 <u>Purchased Property Services</u>				
440 Rentals		9,538.32		9,538.32
<b>Total Purchased Property Services</b>		<b>\$9,538.32</b>		<b>\$9,538.32</b>
500 <u>Other Purchased Services</u>				
561 Tuition To Other School Districts Within the State		5,452.33		5,452.33
568 Tuition To Private Residential Rehabilitative Institutions (PRRI) [In-State] and Detention Centers		1,298.43		1,298.43
<b>Total Other Purchased Services</b>		<b>\$6,750.76</b>		<b>\$6,750.76</b>
600 <u>Supplies</u>				
640 Books and Periodicals			806.52	806.52
<b>Total Supplies</b>			<b>\$806.52</b>	<b>\$806.52</b>
<b>Total 1441 Adjudicated / Court-Placed Programs</b>		<b>\$409,628.32</b>	<b>\$806.52</b>	<b>\$410,434.84</b>

LEA : 116496503      Shamokin Area SD

Printed 11/18/2016 7:52:28 AM

General Fund (10)

1442 Alternative Education Programs	Elementary	Secondary	Federal	Total
100 <u>Personnel Services – Salaries</u>				
100 Personnel Services – Salaries		85,932.09		85,932.09
<b>Total Personnel Services – Salaries</b>		<b>\$85,932.09</b>		<b>\$85,932.09</b>
200 <u>Personnel Services – Employee Benefits</u>				
210 Group Insurance – Contracted Provider		37,048.99		37,048.99
220 Social Security Contributions		6,490.09		6,490.09
230 PSERS Retirement Contributions		22,204.74		22,204.74
260 Workers' Compensation		773.21		773.21
<b>Total Personnel Services – Employee Benefits</b>		<b>\$66,517.03</b>		<b>\$66,517.03</b>
500 <u>Other Purchased Services</u>				
561 Tuition To Other School Districts Within the State	26,280.00	20,829.22		47,109.22
568 Tuition To Private Residential Rehabilitative Institutions (PRRI) [In-State] and Detention Centers	17,564.50	127,686.48		145,250.98
<b>Total Other Purchased Services</b>	<b>\$43,844.50</b>	<b>\$148,515.70</b>		<b>\$192,360.20</b>
600 <u>Supplies</u>				
640 Books and Periodicals		209.85		209.85
<b>Total Supplies</b>		<b>\$209.85</b>		<b>\$209.85</b>
800 <u>Other Objects</u>				
810 Dues and Fees		800.00		800.00
<b>Total Other Objects</b>		<b>\$800.00</b>		<b>\$800.00</b>
<b>Total 1442 Alternative Education Programs</b>	<b>\$43,844.50</b>	<b>\$301,974.67</b>		<b>\$345,819.17</b>

LEA : 116496503      Shamokin Area SD

Printed 11/18/2016 7:52:28 AM

General Fund (10)

1450 Instructional Programs Outside the Established School Day	<u>Elementary</u>	<u>Secondary</u>	<u>Federal</u>	<u>Total</u>
<b>100 <u>Personnel Services – Salaries</u></b>				
100 Personnel Services – Salaries			30,350.00	30,350.00
<b>Total Personnel Services – Salaries</b>			<b>\$30,350.00</b>	<b>\$30,350.00</b>
<b>200 <u>Personnel Services – Employee Benefits</u></b>				
220 Social Security Contributions			2,322.25	2,322.25
230 PSERS Retirement Contributions			7,842.46	7,842.46
260 Workers’ Compensation			273.34	273.34
<b>Total Personnel Services – Employee Benefits</b>			<b>\$10,438.05</b>	<b>\$10,438.05</b>
<b>Total 1450 Instructional Programs Outside the Established School Day</b>			<b>\$40,788.05</b>	<b>\$40,788.05</b>

LEA : 116496503      Shamokin Area SD

Printed 11/18/2016 7:52:28 AM

General Fund (10)				
1800 Pre-Kindergarten	Elementary	Secondary	Federal	Total
100 Personnel Services – Salaries				
100 Personnel Services – Salaries				87,667.50
Total Personnel Services – Salaries				\$87,667.50
200 Personnel Services – Employee Benefits				
210 Group Insurance – Contracted Provider				29,111.93
220 Social Security Contributions				6,640.91
230 PSERS Retirement Contributions				22,547.34
260 Workers' Compensation				788.99
270 Group Insurance – Self-Insurance				6,000.00
Total Personnel Services – Employee Benefits				\$65,089.17
300 Purchased Professional and Technical Services				
324 Professional Educational Services – Employee Training and Development Services				15.00
329 Professional Educational Services – Other				18,288.24
Total Purchased Professional and Technical Services				\$18,303.24
500 Other Purchased Services				
510 Student Transportation Services				171.74
Total Other Purchased Services				\$171.74
600 Supplies				
610 General Supplies				21,097.20
630 Food				10,565.55
640 Books and Periodicals				417.15
650 Supplies & Fees – Technology Related				315.85
Total Supplies				\$32,395.75
700 Property				
750 Equipment – Original and Additional				36,050.00
Total Property				\$36,050.00
800 Other Objects				
810 Dues and Fees				615.00
Total Other Objects				\$615.00
Total 1800 Pre-Kindergarten				\$240,292.40

LEA : 116496503      Shamokin Area SD

Printed 11/18/2016 7:52:28 AM

<b>General Fund (10)</b>				
<b>1801 Pre-K Instruction</b>	<b><u>Elementary</u></b>	<b><u>Secondary</u></b>	<b><u>Federal</u></b>	<b><u>Total</u></b>
<b>100 <u>Personnel Services – Salaries</u></b>				
100 Personnel Services – Salaries				87,667.50
<b>Total Personnel Services – Salaries</b>				<b>\$87,667.50</b>
<b>200 <u>Personnel Services – Employee Benefits</u></b>				
210 Group Insurance – Contracted Provider				29,111.93
220 Social Security Contributions				6,640.91
230 PSERS Retirement Contributions				22,547.34
260 Workers' Compensation				788.99
270 Group Insurance – Self-Insurance				6,000.00
<b>Total Personnel Services – Employee Benefits</b>				<b>\$65,089.17</b>
<b>300 <u>Purchased Professional and Technical Services</u></b>				
329 Professional Educational Services – Other				18,288.24
<b>Total Purchased Professional and Technical Services</b>				<b>\$18,288.24</b>
<b>500 <u>Other Purchased Services</u></b>				
510 Student Transportation Services				171.74
<b>Total Other Purchased Services</b>				<b>\$171.74</b>
<b>600 <u>Supplies</u></b>				
610 General Supplies				510.81
640 Books and Periodicals				417.15
650 Supplies & Fees – Technology Related				315.85
<b>Total Supplies</b>				<b>\$1,243.81</b>
<b>700 <u>Property</u></b>				
750 Equipment – Original and Additional				36,050.00
<b>Total Property</b>				<b>\$36,050.00</b>
<b>800 <u>Other Objects</u></b>				
810 Dues and Fees				615.00
<b>Total Other Objects</b>				<b>\$615.00</b>
<b>Total 1801 Pre-K Instruction</b>				<b>\$209,125.46</b>

LEA : 116496503     Shamokin Area SD

Printed 11/18/2016 7:52:28 AM

General Fund (10)				
1803 Pre-K Operations and Maintenance	<u>Elementary</u>	<u>Secondary</u>	<u>Federal</u>	<u>Total</u>
600 <u>Supplies</u>				
610 General Supplies				20,586.39
Total Supplies				\$20,586.39
Total 1803 Pre-K Operations and Maintenance				\$20,586.39

LEA : 116496503     Shamokin Area SD

Printed 11/18/2016 7:52:28 AM

General Fund (10)				
1805 Pre-K Food Services	<u>Elementary</u>	<u>Secondary</u>	<u>Federal</u>	<u>Total</u>
600 <u>Supplies</u>				
630 Food				10,565.55
Total Supplies				\$10,565.55
Total 1805 Pre-K Food Services				\$10,565.55

LEA : 116496503     Shamokin Area SD

Printed 11/18/2016 7:52:28 AM

General Fund (10)

1806 Pre-K Professional Development	<u>Elementary</u>	<u>Secondary</u>	<u>Federal</u>	<u>Total</u>
300 <u>Purchased Professional and Technical Services</u>				
324 Professional Educational Services – Employee Training and Development Services				15.00
Total Purchased Professional and Technical Services				\$15.00
Total 1806 Pre-K Professional Development				\$15.00



LEA : 116496503      Shamokin Area SD

Printed 11/18/2016 7:52:30 AM

General Fund (10)

2000 Support Services

Total

100	<u>Personnel Services – Salaries</u>	
100	Personnel Services – Salaries	3,047,733.07
Total Personnel Services – Salaries		\$3,047,733.07
200	<u>Personnel Services – Employee Benefits</u>	
210	Group Insurance – Contracted Provider	932,774.46
220	Social Security Contributions	229,606.80
230	PSERS Retirement Contributions	746,068.74
240	Tuition Reimbursement	6,312.00
250	Unemployment Compensation	1,820.50
260	Workers' Compensation	27,446.67
270	Group Insurance – Self-Insurance	61,999.04
290	Other Current Employee Benefits	23,011.47
Total Personnel Services – Employee Benefits		\$2,029,039.68
300	<u>Purchased Professional and Technical Services</u>	
310	Official / Administrative Services	19,203.89
322	Professional Educational Services – Ius	43,980.55
324	Professional Educational Services – Employee Training and Development Services	8,534.50
329	Professional Educational Services – Other	50,253.00
330	Other Professional Services	164,813.97
340	Technical Services	420.00
350	Security / Safety Services	63,475.00
390	Other Purchased Professional and Technical Services	31,715.17
Total Purchased Professional and Technical Services		\$382,396.08
400	<u>Purchased Property Services</u>	
410	Cleaning Services	69,974.61
420	Utility Services	407,943.32
430	Repairs and Maintenance Services	60,696.57
440	Rentals	815,233.49
490	Other Purchased Property Services	7,929.50
Total Purchased Property Services		\$1,361,777.49
500	<u>Other Purchased Services</u>	
513	Contracted Carriers	1,171,668.00
516	Student Transportation Services From the IU	50,484.70
520	Insurance – General	300.00
522	Automotive Liability Insurance	11,095.00
523	General Property and Liability Insurance	122,858.00
529	Other Insurance	34.45
530	Communications	30,073.84
549	Other Advertising/Public Relations	3,052.07
550	Printing and Binding	1,778.00
580	Travel	3,646.43
Total Other Purchased Services		\$1,394,990.49
600	<u>Supplies</u>	
610	General Supplies	244,050.80

LEA : 116496503     Shamokin Area SD

Printed 11/18/2016 7:52:30 AM

General Fund (10)

2000 Support Services

Total

600	<u>Supplies</u>	
620	Energy	135,984.21
630	Food	538.29
640	Books and Periodicals	911.76
650	Supplies & Fees – Technology Related	6,527.14
Total Supplies		\$388,012.20
700	<u>Property</u>	
750	Equipment – Original and Additional	220,374.27
760	Equipment – Replacement	353,060.34
Total Property		\$573,434.61
800	<u>Other Objects</u>	
810	Dues and Fees	18,831.44
820	Claims and Judgments Against the LEA	381.20
830	Interest	2,816.91
890	Miscellaneous Expenditures	310.50
Total Other Objects		\$22,340.05
Total 2000 Support Services		\$9,199,723.67

LEA : 116496503      Shamokin Area SD

Printed 11/18/2016 7:52:30 AM

General Fund (10)

2100 Support Services – Students	Elementary	Secondary	Federal	Total
100 <u>Personnel Services – Salaries</u>				
100 Personnel Services – Salaries	84,550.01	131,679.66	14,619.36	306,675.96
<b>Total Personnel Services – Salaries</b>	<b>\$84,550.01</b>	<b>\$131,679.66</b>	<b>\$14,619.36</b>	<b>\$306,675.96</b>
200 <u>Personnel Services – Employee Benefits</u>				
210 Group Insurance – Contracted Provider	21,299.50	38,334.22	11,626.04	90,656.33
220 Social Security Contributions	6,578.67	9,952.17	1,107.45	23,415.14
230 PSERS Retirement Contributions	22,107.14	33,902.07	3,777.64	79,039.62
240 Tuition Reimbursement		4,722.00		4,722.00
260 Workers' Compensation	778.92	1,185.18	131.63	2,778.16
270 Group Insurance – Self-Insurance		16,000.00		16,000.00
<b>Total Personnel Services – Employee Benefits</b>	<b>\$50,764.23</b>	<b>\$104,095.64</b>	<b>\$16,642.76</b>	<b>\$216,611.25</b>
300 <u>Purchased Professional and Technical Services</u>				
322 Professional Educational Services – Ius				9,751.97
324 Professional Educational Services – Employee Training and Development Services	220.00			300.00
330 Other Professional Services	2,180.00			33,638.80
<b>Total Purchased Professional and Technical Services</b>	<b>\$2,400.00</b>			<b>\$43,690.77</b>
500 <u>Other Purchased Services</u>				
530 Communications	48.97			48.97
580 Travel	367.00	1.84		368.84
<b>Total Other Purchased Services</b>	<b>\$415.97</b>	<b>\$1.84</b>		<b>\$417.81</b>
600 <u>Supplies</u>				
610 General Supplies	5,326.95	1,986.78		7,739.90
630 Food				51.42
640 Books and Periodicals				138.76
<b>Total Supplies</b>	<b>\$5,326.95</b>	<b>\$1,986.78</b>		<b>\$7,930.08</b>
800 <u>Other Objects</u>				
890 Miscellaneous Expenditures				310.50
<b>Total Other Objects</b>				<b>\$310.50</b>
<b>Total 2100 Support Services – Students</b>	<b>\$143,457.16</b>	<b>\$237,763.92</b>	<b>\$31,262.12</b>	<b>\$575,636.37</b>

LEA : 116496503      Shamokin Area SD

Printed 11/18/2016 7:52:30 AM

General Fund (10)

2120 Guidance Services	Elementary	Secondary	Federal	Total
100 <u>Personnel Services – Salaries</u>				
100 Personnel Services – Salaries	36,000.00	131,180.66	14,619.36	181,800.02
<b>Total Personnel Services – Salaries</b>	<b>\$36,000.00</b>	<b>\$131,180.66</b>	<b>\$14,619.36</b>	<b>\$181,800.02</b>
200 <u>Personnel Services – Employee Benefits</u>				
210 Group Insurance – Contracted Provider	75.60	37,581.29	11,626.04	49,282.93
220 Social Security Contributions	2,754.71	9,913.99	1,107.45	13,776.15
230 PSERS Retirement Contributions	9,043.97	33,835.14	3,777.64	46,656.75
240 Tuition Reimbursement		4,722.00		4,722.00
260 Workers' Compensation	323.98	1,180.69	131.63	1,636.30
270 Group Insurance – Self-Insurance		16,000.00		16,000.00
<b>Total Personnel Services – Employee Benefits</b>	<b>\$12,198.26</b>	<b>\$103,233.11</b>	<b>\$16,642.76</b>	<b>\$132,074.13</b>
300 <u>Purchased Professional and Technical Services</u>				
324 Professional Educational Services – Employee Training and Development Services	220.00			220.00
<b>Total Purchased Professional and Technical Services</b>	<b>\$220.00</b>			<b>\$220.00</b>
500 <u>Other Purchased Services</u>				
580 Travel	133.24			133.24
<b>Total Other Purchased Services</b>	<b>\$133.24</b>			<b>\$133.24</b>
600 <u>Supplies</u>				
610 General Supplies	69.57	135.74		205.31
<b>Total Supplies</b>	<b>\$69.57</b>	<b>\$135.74</b>		<b>\$205.31</b>
<b>Total 2120 Guidance Services</b>	<b>\$48,621.07</b>	<b>\$234,549.51</b>	<b>\$31,262.12</b>	<b>\$314,432.70</b>

LEA : 116496503      Shamokin Area SD

Printed 11/18/2016 7:52:30 AM

General Fund (10)

2140 Psychological Services	Elementary	Secondary	Federal	Total
100 <u>Personnel Services – Salaries</u>				
100 Personnel Services – Salaries	48,550.01	499.00		49,049.01
<b>Total Personnel Services – Salaries</b>	<b>\$48,550.01</b>	<b>\$499.00</b>		<b>\$49,049.01</b>
200 <u>Personnel Services – Employee Benefits</u>				
210 Group Insurance – Contracted Provider	21,223.90	752.93		21,976.83
220 Social Security Contributions	3,823.96	38.18		3,862.14
230 PSERS Retirement Contributions	13,063.17	66.93		13,130.10
260 Workers' Compensation	454.94	4.49		459.43
<b>Total Personnel Services – Employee Benefits</b>	<b>\$38,565.97</b>	<b>\$862.53</b>		<b>\$39,428.50</b>
300 <u>Purchased Professional and Technical Services</u>				
330 Other Professional Services	2,180.00			2,180.00
<b>Total Purchased Professional and Technical Services</b>	<b>\$2,180.00</b>			<b>\$2,180.00</b>
500 <u>Other Purchased Services</u>				
530 Communications	48.97			48.97
580 Travel	233.76	1.84		235.60
<b>Total Other Purchased Services</b>	<b>\$282.73</b>	<b>\$1.84</b>		<b>\$284.57</b>
600 <u>Supplies</u>				
610 General Supplies	5,257.38	1,851.04		7,108.42
<b>Total Supplies</b>	<b>\$5,257.38</b>	<b>\$1,851.04</b>		<b>\$7,108.42</b>
<b>Total 2140 Psychological Services</b>	<b>\$94,836.09</b>	<b>\$3,214.41</b>		<b>\$98,050.50</b>

LEA : 116496503      Shamokin Area SD

Printed 11/18/2016 7:52:30 AM

General Fund (10)				
2160 Social Work Services	<u>Elementary</u>	<u>Secondary</u>	<u>Federal</u>	<u>Total</u>
100 <u>Personnel Services – Salaries</u>				
100 Personnel Services – Salaries				75,826.93
Total Personnel Services – Salaries				\$75,826.93
200 <u>Personnel Services – Employee Benefits</u>				
210 Group Insurance – Contracted Provider				19,396.57
220 Social Security Contributions				5,776.85
230 PSERS Retirement Contributions				19,252.77
260 Workers' Compensation				682.43
Total Personnel Services – Employee Benefits				\$45,108.62
300 <u>Purchased Professional and Technical Services</u>				
322 Professional Educational Services – Ius				9,751.97
324 Professional Educational Services – Employee Training and Development Services				80.00
330 Other Professional Services				31,458.80
Total Purchased Professional and Technical Services				\$41,290.77
600 <u>Supplies</u>				
610 General Supplies				426.17
630 Food				51.42
640 Books and Periodicals				138.76
Total Supplies				\$616.35
800 <u>Other Objects</u>				
890 Miscellaneous Expenditures				310.50
Total Other Objects				\$310.50
Total 2160 Social Work Services				\$163,153.17

LEA : 116496503      Shamokin Area SD

Printed 11/18/2016 7:52:30 AM

General Fund (10)

2200 Support Services – Instructional Staff	Elementary	Secondary	Federal	Total
100 <u>Personnel Services – Salaries</u>				
100 Personnel Services – Salaries	63,133.67	219,065.13	1,958.50	284,157.30
<b>Total Personnel Services – Salaries</b>	<b>\$63,133.67</b>	<b>\$219,065.13</b>	<b>\$1,958.50</b>	<b>\$284,157.30</b>
200 <u>Personnel Services – Employee Benefits</u>				
210 Group Insurance – Contracted Provider	18,528.11	56,413.71		74,941.82
220 Social Security Contributions	4,778.24	16,670.77	149.84	21,598.85
230 PSERS Retirement Contributions	15,074.39	55,973.23	23.26	71,070.88
240 Tuition Reimbursement	1,410.00			1,410.00
260 Workers' Compensation	568.23	1,971.54	17.63	2,557.40
270 Group Insurance – Self-Insurance	6,000.00	16,000.00		22,000.00
290 Other Current Employee Benefits		5,109.72		5,109.72
<b>Total Personnel Services – Employee Benefits</b>	<b>\$46,358.97</b>	<b>\$152,138.97</b>	<b>\$190.73</b>	<b>\$198,688.67</b>
300 <u>Purchased Professional and Technical Services</u>				
322 Professional Educational Services – Ius			30,428.58	30,428.58
324 Professional Educational Services – Employee Training and Development Services	1,415.50	183.50	3,419.00	5,018.00
329 Professional Educational Services – Other			13,057.52	13,057.52
<b>Total Purchased Professional and Technical Services</b>	<b>\$1,415.50</b>	<b>\$183.50</b>	<b>\$46,905.10</b>	<b>\$48,504.10</b>
500 <u>Other Purchased Services</u>				
530 Communications		333.79		333.79
580 Travel	482.96	871.99		1,354.95
<b>Total Other Purchased Services</b>	<b>\$482.96</b>	<b>\$1,205.78</b>		<b>\$1,688.74</b>
600 <u>Supplies</u>				
610 General Supplies	725.00	1,576.10		2,301.10
630 Food	215.44	30.00		245.44
640 Books and Periodicals	166.70			166.70
<b>Total Supplies</b>	<b>\$1,107.14</b>	<b>\$1,606.10</b>		<b>\$2,713.24</b>
800 <u>Other Objects</u>				
810 Dues and Fees		679.00		679.00
<b>Total Other Objects</b>		<b>\$679.00</b>		<b>\$679.00</b>
<b>Total 2200 Support Services – Instructional Staff</b>	<b>\$112,498.24</b>	<b>\$374,878.48</b>	<b>\$49,054.33</b>	<b>\$536,431.05</b>

LEA : 116496503      Shamokin Area SD

Printed 11/18/2016 7:52:30 AM

General Fund (10)				
2250 School Library Services	Elementary	Secondary	Federal	Total
100 Personnel Services – Salaries				
100 Personnel Services – Salaries	10,238.83	11,956.92		22,195.75
Total Personnel Services – Salaries	\$10,238.83	\$11,956.92		\$22,195.75
200 Personnel Services – Employee Benefits				
220 Social Security Contributions	783.29	914.76		1,698.05
230 PSERS Retirement Contributions	2,645.77	3,089.62		5,735.39
260 Workers' Compensation	92.18	107.64		199.82
270 Group Insurance – Self-Insurance	6,000.00	16,000.00		22,000.00
Total Personnel Services – Employee Benefits	\$9,521.24	\$20,112.02		\$29,633.26
600 Supplies				
610 General Supplies	725.00	460.00		1,185.00
640 Books and Periodicals	166.70			166.70
Total Supplies	\$891.70	\$460.00		\$1,351.70
Total 2250 School Library Services	\$20,651.77	\$32,528.94		\$53,180.71



LEA : 116496503      Shamokin Area SD

Printed 11/18/2016 7:52:30 AM

General Fund (10)

2260 Instruction and Curriculum Development Services	Elementary	Secondary	Federal	Total
100 <u>Personnel Services – Salaries</u>				
100 Personnel Services – Salaries	52,894.84	205,827.81		258,722.65
<b>Total Personnel Services – Salaries</b>	<b>\$52,894.84</b>	<b>\$205,827.81</b>		<b>\$258,722.65</b>
200 <u>Personnel Services – Employee Benefits</u>				
210 Group Insurance – Contracted Provider	18,528.11	55,163.71		73,691.82
220 Social Security Contributions	3,994.95	15,658.04		19,652.99
230 PSERS Retirement Contributions	12,428.62	52,552.75		64,981.37
260 Workers' Compensation	476.05	1,852.37		2,328.42
290 Other Current Employee Benefits		5,109.72		5,109.72
<b>Total Personnel Services – Employee Benefits</b>	<b>\$35,427.73</b>	<b>\$130,336.59</b>		<b>\$165,764.32</b>
500 <u>Other Purchased Services</u>				
580 Travel		871.99		871.99
<b>Total Other Purchased Services</b>		<b>\$871.99</b>		<b>\$871.99</b>
600 <u>Supplies</u>				
610 General Supplies		1,116.10		1,116.10
630 Food		30.00		30.00
<b>Total Supplies</b>		<b>\$1,146.10</b>		<b>\$1,146.10</b>
800 <u>Other Objects</u>				
810 Dues and Fees		679.00		679.00
<b>Total Other Objects</b>		<b>\$679.00</b>		<b>\$679.00</b>
<b>Total 2260 Instruction and Curriculum Development Services</b>	<b>\$88,322.57</b>	<b>\$338,861.49</b>		<b>\$427,184.06</b>

LEA : 116496503      Shamokin Area SD

Printed 11/18/2016 7:52:30 AM

General Fund (10)

2270 Instructional Staff Professional Development Services	Elementary	Secondary	Federal	Total
<b>100 Personnel Services – Salaries</b>				
100 Personnel Services – Salaries		1,280.40	1,958.50	3,238.90
<b>Total Personnel Services – Salaries</b>		<b>\$1,280.40</b>	<b>\$1,958.50</b>	<b>\$3,238.90</b>
<b>200 Personnel Services – Employee Benefits</b>				
210 Group Insurance – Contracted Provider		1,250.00		1,250.00
220 Social Security Contributions		97.97	149.84	247.81
230 PSERS Retirement Contributions		330.86	23.26	354.12
240 Tuition Reimbursement	1,410.00			1,410.00
260 Workers' Compensation		11.53	17.63	29.16
<b>Total Personnel Services – Employee Benefits</b>	<b>\$1,410.00</b>	<b>\$1,690.36</b>	<b>\$190.73</b>	<b>\$3,291.09</b>
<b>300 Purchased Professional and Technical Services</b>				
324 Professional Educational Services – Employee Training and Development Services	1,415.50	183.50	3,419.00	5,018.00
329 Professional Educational Services – Other			13,057.52	13,057.52
<b>Total Purchased Professional and Technical Services</b>	<b>\$1,415.50</b>	<b>\$183.50</b>	<b>\$16,476.52</b>	<b>\$18,075.52</b>
<b>500 Other Purchased Services</b>				
530 Communications		333.79		333.79
580 Travel	482.96			482.96
<b>Total Other Purchased Services</b>	<b>\$482.96</b>	<b>\$333.79</b>		<b>\$816.75</b>
<b>600 Supplies</b>				
630 Food	215.44			215.44
<b>Total Supplies</b>	<b>\$215.44</b>			<b>\$215.44</b>
<b>Total 2270 Instructional Staff Professional Development Services</b>	<b>\$3,523.90</b>	<b>\$3,488.05</b>	<b>\$18,625.75</b>	<b>\$25,637.70</b>

LEA : 116496503      Shamokin Area SD

Printed 11/18/2016 7:52:30 AM

General Fund (10)				
2280 Nonpublic Support Services	<u>Elementary</u>	<u>Secondary</u>	<u>Federal</u>	<u>Total</u>
300 <u>Purchased Professional and Technical Services</u>				
322 Professional Educational Services – lus			30,428.58	30,428.58
Total Purchased Professional and Technical Services			\$30,428.58	\$30,428.58
Total 2280 Nonpublic Support Services			\$30,428.58	\$30,428.58

LEA : 116496503      Shamokin Area SD

Printed 11/18/2016 7:52:30 AM

General Fund (10)

2300 Support Services – Administration	Elementary	Secondary	Federal	Total
100 <u>Personnel Services – Salaries</u>				
100 Personnel Services – Salaries	302,785.15	326,343.32		851,843.53
<b>Total Personnel Services – Salaries</b>	<b>\$302,785.15</b>	<b>\$326,343.32</b>		<b>\$851,843.53</b>
200 <u>Personnel Services – Employee Benefits</u>				
210 Group Insurance – Contracted Provider	95,975.01	97,186.50		202,339.97
220 Social Security Contributions	22,907.23	24,665.43		63,093.74
230 PSERS Retirement Contributions	74,969.22	78,923.58		197,560.96
240 Tuition Reimbursement		180.00		180.00
250 Unemployment Compensation				237.60
260 Workers' Compensation	2,725.16	2,937.04		7,666.08
290 Other Current Employee Benefits	3,850.00	4,464.16		12,975.95
<b>Total Personnel Services – Employee Benefits</b>	<b>\$200,426.62</b>	<b>\$208,356.71</b>		<b>\$484,054.30</b>
300 <u>Purchased Professional and Technical Services</u>				
310 Official / Administrative Services				19,203.89
324 Professional Educational Services – Employee Training and Development Services		25.00		25.00
330 Other Professional Services				91,733.15
390 Other Purchased Professional and Technical Services				30,623.17
<b>Total Purchased Professional and Technical Services</b>		<b>\$25.00</b>		<b>\$141,585.21</b>
400 <u>Purchased Property Services</u>				
430 Repairs and Maintenance Services	539.00	276.00		815.00
440 Rentals	282.52	580.00		1,361.89
<b>Total Purchased Property Services</b>	<b>\$821.52</b>	<b>\$856.00</b>		<b>\$2,176.89</b>
500 <u>Other Purchased Services</u>				
520 Insurance – General				300.00
530 Communications		305.00		1,391.77
549 Other Advertising/Public Relations		509.25		1,781.93
550 Printing and Binding		1,778.00		1,778.00
580 Travel		294.07		294.07
<b>Total Other Purchased Services</b>		<b>\$2,886.32</b>		<b>\$5,545.77</b>
600 <u>Supplies</u>				
610 General Supplies	6,520.87	563.71		9,856.66
630 Food				204.00
640 Books and Periodicals	250.90			444.90
<b>Total Supplies</b>	<b>\$6,771.77</b>	<b>\$563.71</b>		<b>\$10,505.56</b>
700 <u>Property</u>				
750 Equipment – Original and Additional				6,901.00
760 Equipment – Replacement	4,045.00			5,546.00
<b>Total Property</b>	<b>\$4,045.00</b>			<b>\$12,447.00</b>
800 <u>Other Objects</u>				
810 Dues and Fees	1,370.00	1,950.20	1,250.00	12,182.73
820 Claims and Judgments Against the LEA				381.20

LEA : 116496503     Shamokin Area SD

Printed 11/18/2016 7:52:30 AM

General Fund (10)

2300 Support Services – Administration	<u>Elementary</u>	<u>Secondary</u>	<u>Federal</u>	<u>Total</u>
Total Other Objects	\$1,370.00	\$1,950.20	\$1,250.00	\$12,563.93
Total 2300 Support Services – Administration	\$516,220.06	\$540,981.26	\$1,250.00	\$1,520,722.19

LEA : 116496503      Shamokin Area SD

Printed 11/18/2016 7:52:30 AM

General Fund (10)				
2310 Board Services				
	<u>Elementary</u>	<u>Secondary</u>	<u>Federal</u>	<u>Total</u>
100 <u>Personnel Services – Salaries</u>				
100 Personnel Services – Salaries				5,400.20
Total Personnel Services – Salaries				\$5,400.20
200 <u>Personnel Services – Employee Benefits</u>				
220 Social Security Contributions				413.40
260 Workers’ Compensation				48.36
Total Personnel Services – Employee Benefits				\$461.76
500 <u>Other Purchased Services</u>				
520 Insurance – General				300.00
549 Other Advertising/Public Relations				1,272.68
Total Other Purchased Services				\$1,572.68
600 <u>Supplies</u>				
610 General Supplies				1,039.00
630 Food				204.00
Total Supplies				\$1,243.00
800 <u>Other Objects</u>				
810 Dues and Fees				5,272.53
820 Claims and Judgments Against the LEA				381.20
Total Other Objects				\$5,653.73
Total 2310 Board Services				\$14,331.37

LEA : 116496503      Shamokin Area SD

Printed 11/18/2016 7:52:30 AM

General Fund (10)				
2330 Tax Assessment and Collection Services	<u>Elementary</u>	<u>Secondary</u>	<u>Federal</u>	<u>Total</u>
100 <u>Personnel Services – Salaries</u>				
100 Personnel Services – Salaries				35,087.44
Total Personnel Services – Salaries				\$35,087.44
200 <u>Personnel Services – Employee Benefits</u>				
220 Social Security Contributions				2,683.90
250 Unemployment Compensation				237.60
260 Workers’ Compensation				315.62
Total Personnel Services – Employee Benefits				\$3,237.12
300 <u>Purchased Professional and Technical Services</u>				
310 Official / Administrative Services				19,203.89
330 Other Professional Services				33,988.73
390 Other Purchased Professional and Technical Services				30,623.17
Total Purchased Professional and Technical Services				\$83,815.79
500 <u>Other Purchased Services</u>				
530 Communications				1,086.77
Total Other Purchased Services				\$1,086.77
600 <u>Supplies</u>				
610 General Supplies				569.93
Total Supplies				\$569.93
Total 2330 Tax Assessment and Collection Services				\$123,797.05

LEA : 116496503     Shamokin Area SD

Printed 11/18/2016 7:52:30 AM

General Fund (10)

2350 Legal and Accounting Services	<u>Elementary</u>	<u>Secondary</u>	<u>Federal</u>	<u>Total</u>
300 <u>Purchased Professional and Technical Services</u>				
330 Other Professional Services				57,744.42
Total Purchased Professional and Technical Services				\$57,744.42
800 <u>Other Objects</u>				
810 Dues and Fees				790.00
Total Other Objects				\$790.00
Total 2350 Legal and Accounting Services				\$58,534.42



LEA : 116496503      Shamokin Area SD

Printed 11/18/2016 7:52:30 AM

General Fund (10)

2360 Office of the Superintendent / Executive Director Services	<u>Elementary</u>	<u>Secondary</u>	<u>Federal</u>	<u>Total</u>
100 <u>Personnel Services – Salaries</u>				
100 Personnel Services – Salaries				182,227.42
<b>Total Personnel Services – Salaries</b>				<b>\$182,227.42</b>
200 <u>Personnel Services – Employee Benefits</u>				
210 Group Insurance – Contracted Provider				9,178.46
220 Social Security Contributions				12,423.78
230 PSERS Retirement Contributions				43,668.16
260 Workers' Compensation				1,639.90
290 Other Current Employee Benefits				4,661.79
<b>Total Personnel Services – Employee Benefits</b>				<b>\$71,572.09</b>
400 <u>Purchased Property Services</u>				
440 Rentals				499.37
<b>Total Purchased Property Services</b>				<b>\$499.37</b>
500 <u>Other Purchased Services</u>				
530 Communications		250.12		250.12
<b>Total Other Purchased Services</b>		<b>\$250.12</b>		<b>\$250.12</b>
600 <u>Supplies</u>				
610 General Supplies				758.20
640 Books and Periodicals				194.00
<b>Total Supplies</b>				<b>\$952.20</b>
700 <u>Property</u>				
750 Equipment – Original and Additional				6,901.00
760 Equipment – Replacement				1,501.00
<b>Total Property</b>				<b>\$8,402.00</b>
800 <u>Other Objects</u>				
810 Dues and Fees				1,550.00
<b>Total Other Objects</b>				<b>\$1,550.00</b>
<b>Total 2360 Office of the Superintendent / Executive Director Services</b>		<b>\$250.12</b>		<b>\$265,453.20</b>

LEA : 116496503      Shamokin Area SD

Printed 11/18/2016 7:52:30 AM

General Fund (10)

2380 Office of the Principal Services	Elementary	Secondary	Federal	Total
<b>100 <u>Personnel Services – Salaries</u></b>				
100 Personnel Services – Salaries	302,785.15	326,343.32		629,128.47
<b>Total Personnel Services – Salaries</b>	<b>\$302,785.15</b>	<b>\$326,343.32</b>		<b>\$629,128.47</b>
<b>200 <u>Personnel Services – Employee Benefits</u></b>				
210 Group Insurance – Contracted Provider	95,975.01	97,186.50		193,161.51
220 Social Security Contributions	22,907.23	24,665.43		47,572.66
230 PSERS Retirement Contributions	74,969.22	78,923.58		153,892.80
240 Tuition Reimbursement		180.00		180.00
260 Workers' Compensation	2,725.16	2,937.04		5,662.20
290 Other Current Employee Benefits	3,850.00	4,464.16		8,314.16
<b>Total Personnel Services – Employee Benefits</b>	<b>\$200,426.62</b>	<b>\$208,356.71</b>		<b>\$408,783.33</b>
<b>300 <u>Purchased Professional and Technical Services</u></b>				
324 Professional Educational Services – Employee Training and Development Services		25.00		25.00
<b>Total Purchased Professional and Technical Services</b>		<b>\$25.00</b>		<b>\$25.00</b>
<b>400 <u>Purchased Property Services</u></b>				
430 Repairs and Maintenance Services	539.00	276.00		815.00
440 Rentals	282.52	580.00		862.52
<b>Total Purchased Property Services</b>	<b>\$821.52</b>	<b>\$856.00</b>		<b>\$1,677.52</b>
<b>500 <u>Other Purchased Services</u></b>				
530 Communications		54.88		54.88
549 Other Advertising/Public Relations		509.25		509.25
550 Printing and Binding		1,778.00		1,778.00
580 Travel		294.07		294.07
<b>Total Other Purchased Services</b>		<b>\$2,636.20</b>		<b>\$2,636.20</b>
<b>600 <u>Supplies</u></b>				
610 General Supplies	6,520.87	563.71		7,084.58
640 Books and Periodicals	250.90			250.90
<b>Total Supplies</b>	<b>\$6,771.77</b>	<b>\$563.71</b>		<b>\$7,335.48</b>
<b>700 <u>Property</u></b>				
760 Equipment – Replacement	4,045.00			4,045.00
<b>Total Property</b>	<b>\$4,045.00</b>			<b>\$4,045.00</b>
<b>800 <u>Other Objects</u></b>				
810 Dues and Fees	1,370.00	1,950.20		3,320.20
<b>Total Other Objects</b>	<b>\$1,370.00</b>	<b>\$1,950.20</b>		<b>\$3,320.20</b>
<b>Total 2380 Office of the Principal Services</b>	<b>\$516,220.06</b>	<b>\$540,731.14</b>		<b>\$1,056,951.20</b>

LEA : 116496503     Shamokin Area SD

Printed 11/18/2016 7:52:30 AM

General Fund (10)				
2390 Other Administration Services	<u>Elementary</u>	<u>Secondary</u>	<u>Federal</u>	<u>Total</u>
600 <u>Supplies</u>				
610 General Supplies				404.95
Total Supplies				\$404.95
800 <u>Other Objects</u>				
810 Dues and Fees			1,250.00	1,250.00
Total Other Objects			\$1,250.00	\$1,250.00
Total 2390 Other Administration Services			\$1,250.00	\$1,654.95

LEA : 116496503      Shamokin Area SD

Printed 11/18/2016 7:52:30 AM

General Fund (10)					
2400 Support Services – Pupil Health		Elementary	Secondary	Federal	Total
100 <u>Personnel Services – Salaries</u>					
100 Personnel Services – Salaries				16,748.00	226,411.62
Total Personnel Services – Salaries				\$16,748.00	\$226,411.62
200 <u>Personnel Services – Employee Benefits</u>					
210 Group Insurance – Contracted Provider				7,622.73	87,675.23
220 Social Security Contributions				1,262.15	17,142.82
230 PSERS Retirement Contributions				4,327.68	56,479.01
260 Workers' Compensation				150.72	2,037.67
Total Personnel Services – Employee Benefits				\$13,363.28	\$163,334.73
300 <u>Purchased Professional and Technical Services</u>					
330 Other Professional Services					18,620.42
Total Purchased Professional and Technical Services					\$18,620.42
400 <u>Purchased Property Services</u>					
430 Repairs and Maintenance Services					450.25
Total Purchased Property Services					\$450.25
500 <u>Other Purchased Services</u>					
580 Travel					97.70
Total Other Purchased Services					\$97.70
600 <u>Supplies</u>					
610 General Supplies					5,318.07
Total Supplies					\$5,318.07
Total 2400 Support Services – Pupil Health				\$30,111.28	\$414,232.79

LEA : 116496503     Shamokin Area SD

Printed 11/18/2016 7:52:30 AM

General Fund (10)

2420 Medical Services	<u>Elementary</u>	<u>Secondary</u>	<u>Federal</u>	<u>Total</u>
300 <u>Purchased Professional and Technical Services</u>				
330 Other Professional Services				6,177.92
Total Purchased Professional and Technical Services				\$6,177.92
600 <u>Supplies</u>				
610 General Supplies				189.34
Total Supplies				\$189.34
Total 2420 Medical Services				\$6,367.26

LEA : 116496503     Shamokin Area SD

Printed 11/18/2016 7:52:30 AM

General Fund (10)				
2430 Dental Services	<u>Elementary</u>	<u>Secondary</u>	<u>Federal</u>	<u>Total</u>
300 <u>Purchased Professional and Technical Services</u>				
330 Other Professional Services				562.50
<b>Total Purchased Professional and Technical Services</b>				<b>\$562.50</b>
<b>Total 2430 Dental Services</b>				<b>\$562.50</b>

LEA : 116496503      Shamokin Area SD

Printed 11/18/2016 7:52:30 AM

General Fund (10)				
2440 Nursing Services				
	<u>Elementary</u>	<u>Secondary</u>	<u>Federal</u>	<u>Total</u>
100 <u>Personnel Services – Salaries</u>				
100 Personnel Services – Salaries			16,748.00	204,179.69
Total Personnel Services – Salaries			\$16,748.00	\$204,179.69
200 <u>Personnel Services – Employee Benefits</u>				
210 Group Insurance – Contracted Provider			7,622.73	81,061.98
220 Social Security Contributions			1,262.15	15,460.68
230 PSERS Retirement Contributions			4,327.68	50,734.23
260 Workers' Compensation			150.72	1,837.59
Total Personnel Services – Employee Benefits			\$13,363.28	\$149,094.48
400 <u>Purchased Property Services</u>				
430 Repairs and Maintenance Services				450.25
Total Purchased Property Services				\$450.25
500 <u>Other Purchased Services</u>				
580 Travel				97.70
Total Other Purchased Services				\$97.70
600 <u>Supplies</u>				
610 General Supplies				4,441.58
Total Supplies				\$4,441.58
Total 2440 Nursing Services			\$30,111.28	\$358,263.70

LEA : 116496503      Shamokin Area SD

Printed 11/18/2016 7:52:30 AM

General Fund (10)

2450 Nonpublic Health Services	<u>Elementary</u>	<u>Secondary</u>	<u>Federal</u>	<u>Total</u>
100 <u>Personnel Services – Salaries</u>				
100 Personnel Services – Salaries				22,231.93
Total Personnel Services – Salaries				\$22,231.93
200 <u>Personnel Services – Employee Benefits</u>				
210 Group Insurance – Contracted Provider				6,613.25
220 Social Security Contributions				1,682.14
230 PSERS Retirement Contributions				5,744.78
260 Workers' Compensation				200.08
Total Personnel Services – Employee Benefits				\$14,240.25
600 <u>Supplies</u>				
610 General Supplies				687.15
Total Supplies				\$687.15
Total 2450 Nonpublic Health Services				\$37,159.33



LEA : 116496503     Shamokin Area SD

Printed 11/18/2016 7:52:30 AM

General Fund (10)

2490 Other Health Services

<u>Elementary</u>	<u>Secondary</u>	<u>Federal</u>	<u>Total</u>
-------------------	------------------	----------------	--------------

300 Purchased Professional and Technical Services

330 Other Professional Services			11,880.00
---------------------------------	--	--	-----------

<b>Total Purchased Professional and Technical Services</b>			<b>\$11,880.00</b>
--	--	--	--------------------

<b>Total 2490 Other Health Services</b>			<b>\$11,880.00</b>
---	--	--	--------------------

LEA : 116496503      Shamokin Area SD

Printed 11/18/2016 7:52:30 AM

<b>General Fund (10)</b>				
<b>2500 Support Services – Business</b>				
	<u>Elementary</u>	<u>Secondary</u>	<u>Federal</u>	<u>Total</u>
<b>100 <u>Personnel Services – Salaries</u></b>				
100 Personnel Services – Salaries			11,759.79	355,919.21
<b>Total Personnel Services – Salaries</b>			<b>\$11,759.79</b>	<b>\$355,919.21</b>
<b>200 <u>Personnel Services – Employee Benefits</u></b>				
210 Group Insurance – Contracted Provider			10,485.28	107,641.46
220 Social Security Contributions			878.18	26,964.32
230 PSERS Retirement Contributions			3,037.08	88,914.87
250 Unemployment Compensation				1,204.20
260 Workers' Compensation			105.86	3,203.20
290 Other Current Employee Benefits				2,730.00
<b>Total Personnel Services – Employee Benefits</b>			<b>\$14,506.40</b>	<b>\$230,658.05</b>
<b>300 <u>Purchased Professional and Technical Services</u></b>				
322 Professional Educational Services – Ius				3,800.00
330 Other Professional Services				11,495.00
340 Technical Services				420.00
<b>Total Purchased Professional and Technical Services</b>				<b>\$15,715.00</b>
<b>400 <u>Purchased Property Services</u></b>				
430 Repairs and Maintenance Services				360.00
440 Rentals				34,749.12
<b>Total Purchased Property Services</b>				<b>\$35,109.12</b>
<b>500 <u>Other Purchased Services</u></b>				
530 Communications				12,405.49
549 Other Advertising/Public Relations				1,132.14
580 Travel				333.84
<b>Total Other Purchased Services</b>				<b>\$13,871.47</b>
<b>600 <u>Supplies</u></b>				
610 General Supplies				28,922.14
<b>Total Supplies</b>				<b>\$28,922.14</b>
<b>800 <u>Other Objects</u></b>				
810 Dues and Fees				4,124.21
830 Interest				2,816.91
<b>Total Other Objects</b>				<b>\$6,941.12</b>
<b>Total 2500 Support Services – Business</b>			<b>\$26,266.19</b>	<b>\$687,136.11</b>

LEA : 116496503      Shamokin Area SD

Printed 11/18/2016 7:52:30 AM

<b>General Fund (10)</b>				
<b>2510 Fiscal Services</b>	<u><b>Elementary</b></u>	<u><b>Secondary</b></u>	<u><b>Federal</b></u>	<u><b>Total</b></u>
<b>100 <u>Personnel Services – Salaries</u></b>				
100 Personnel Services – Salaries			11,759.79	314,075.77
<b>Total Personnel Services – Salaries</b>			<b>\$11,759.79</b>	<b>\$314,075.77</b>
<b>200 <u>Personnel Services – Employee Benefits</u></b>				
210 Group Insurance – Contracted Provider			10,485.28	99,943.08
220 Social Security Contributions			878.18	23,791.26
230 PSERS Retirement Contributions			3,037.08	78,102.61
250 Unemployment Compensation				1,204.20
260 Workers' Compensation			105.86	2,826.56
290 Other Current Employee Benefits				2,730.00
<b>Total Personnel Services – Employee Benefits</b>			<b>\$14,506.40</b>	<b>\$208,597.71</b>
<b>300 <u>Purchased Professional and Technical Services</u></b>				
330 Other Professional Services				11,495.00
340 Technical Services				420.00
<b>Total Purchased Professional and Technical Services</b>				<b>\$11,915.00</b>
<b>500 <u>Other Purchased Services</u></b>				
530 Communications				971.05
580 Travel				333.84
<b>Total Other Purchased Services</b>				<b>\$1,304.89</b>
<b>600 <u>Supplies</u></b>				
610 General Supplies				23,219.39
<b>Total Supplies</b>				<b>\$23,219.39</b>
<b>800 <u>Other Objects</u></b>				
810 Dues and Fees				4,124.21
830 Interest				2,816.91
<b>Total Other Objects</b>				<b>\$6,941.12</b>
<b>Total 2510 Fiscal Services</b>			<b>\$26,266.19</b>	<b>\$566,053.88</b>

LEA : 116496503      Shamokin Area SD

Printed 11/18/2016 7:52:30 AM

General Fund (10)				
2511 Supervision of Fiscal Services - Head of Component	<u>Elementary</u>	<u>Secondary</u>	<u>Federal</u>	<u>Total</u>
100 <u>Personnel Services – Salaries</u>				
100 Personnel Services – Salaries			11,759.79	163,940.00
Total Personnel Services – Salaries			\$11,759.79	\$163,940.00
200 <u>Personnel Services – Employee Benefits</u>				
210 Group Insurance – Contracted Provider			10,485.28	47,635.76
220 Social Security Contributions			878.18	12,489.14
230 PSERS Retirement Contributions			3,037.08	40,351.00
260 Workers' Compensation			105.86	1,475.46
290 Other Current Employee Benefits				2,730.00
Total Personnel Services – Employee Benefits			\$14,506.40	\$104,681.36
300 <u>Purchased Professional and Technical Services</u>				
340 Technical Services				420.00
Total Purchased Professional and Technical Services				\$420.00
500 <u>Other Purchased Services</u>				
530 Communications				22.91
580 Travel				333.84
Total Other Purchased Services				\$356.75
600 <u>Supplies</u>				
610 General Supplies				11,833.90
Total Supplies				\$11,833.90
800 <u>Other Objects</u>				
810 Dues and Fees				780.00
Total Other Objects				\$780.00
Total 2511 Supervision of Fiscal Services - Head of Component			\$26,266.19	\$282,012.01

LEA : 116496503     Shamokin Area SD

Printed 11/18/2016 7:52:30 AM

General Fund (10)

2513 Receiving and Disbursing Funds Services	<u>Elementary</u>	<u>Secondary</u>	<u>Federal</u>	<u>Total</u>
100 <u>Personnel Services – Salaries</u>				
100 Personnel Services – Salaries				64,617.94
Total Personnel Services – Salaries				\$64,617.94
200 <u>Personnel Services – Employee Benefits</u>				
210 Group Insurance – Contracted Provider				24,444.50
220 Social Security Contributions				4,890.71
230 PSERS Retirement Contributions				16,192.79
260 Workers' Compensation				581.44
Total Personnel Services – Employee Benefits				\$46,109.44
Total 2513 Receiving and Disbursing Funds Services				\$110,727.38

LEA : 116496503      Shamokin Area SD

Printed 11/18/2016 7:52:30 AM

General Fund (10)

2514 Payroll Services	<u>Elementary</u>	<u>Secondary</u>	<u>Federal</u>	<u>Total</u>
100 <u>Personnel Services – Salaries</u>				
100 Personnel Services – Salaries				45,551.30
<b>Total Personnel Services – Salaries</b>				<b>\$45,551.30</b>
200 <u>Personnel Services – Employee Benefits</u>				
210 Group Insurance – Contracted Provider				16,711.12
220 Social Security Contributions				3,379.83
230 PSERS Retirement Contributions				11,548.05
260 Workers' Compensation				409.94
<b>Total Personnel Services – Employee Benefits</b>				<b>\$32,048.94</b>
600 <u>Supplies</u>				
610 General Supplies				11,206.50
<b>Total Supplies</b>				<b>\$11,206.50</b>
<b>Total 2514 Payroll Services</b>				<b>\$88,806.74</b>

LEA : 116496503      Shamokin Area SD

Printed 11/18/2016 7:52:30 AM

General Fund (10)				
2515 Financial Accounting Services	<u>Elementary</u>	<u>Secondary</u>	<u>Federal</u>	<u>Total</u>
100 <u>Personnel Services – Salaries</u>				
100 Personnel Services – Salaries				39,966.53
Total Personnel Services – Salaries				\$39,966.53
200 <u>Personnel Services – Employee Benefits</u>				
210 Group Insurance – Contracted Provider				11,151.70
220 Social Security Contributions				3,031.58
230 PSERS Retirement Contributions				10,010.77
260 Workers' Compensation				359.72
Total Personnel Services – Employee Benefits				\$24,553.77
Total 2515 Financial Accounting Services				\$64,520.30

LEA : 116496503      Shamokin Area SD

Printed 11/18/2016 7:52:30 AM

General Fund (10)				
2516 Internal Auditing Services	<u>Elementary</u>	<u>Secondary</u>	<u>Federal</u>	<u>Total</u>
300 <u>Purchased Professional and Technical Services</u>				
330 Other Professional Services				10,500.00
<b>Total Purchased Professional and Technical Services</b>				<b>\$10,500.00</b>
<b>Total 2516 Internal Auditing Services</b>				<b>\$10,500.00</b>



LEA : 116496503      Shamokin Area SD

Printed 11/18/2016 7:52:30 AM

General Fund (10)				
2517 Property Accounting Services	<u>Elementary</u>	<u>Secondary</u>	<u>Federal</u>	<u>Total</u>
300 <u>Purchased Professional and Technical Services</u>				
330 Other Professional Services				995.00
<b>Total Purchased Professional and Technical Services</b>				<b>\$995.00</b>
<b>Total 2517 Property Accounting Services</b>				<b>\$995.00</b>

LEA : 116496503      Shamokin Area SD

Printed 11/18/2016 7:52:30 AM

General Fund (10)				
2519 Other Fiscal Services	<u>Elementary</u>	<u>Secondary</u>	<u>Federal</u>	<u>Total</u>
200 <u>Personnel Services – Employee Benefits</u>				
250 Unemployment Compensation				1,204.20
Total Personnel Services – Employee Benefits				\$1,204.20
500 <u>Other Purchased Services</u>				
530 Communications				948.14
Total Other Purchased Services				\$948.14
600 <u>Supplies</u>				
610 General Supplies				178.99
Total Supplies				\$178.99
800 <u>Other Objects</u>				
810 Dues and Fees				3,344.21
830 Interest				2,816.91
Total Other Objects				\$6,161.12
Total 2519 Other Fiscal Services				\$8,492.45

LEA : 116496503      Shamokin Area SD

Printed 11/18/2016 7:52:30 AM

General Fund (10)				
2520 Purchasing Services	<u>Elementary</u>	<u>Secondary</u>	<u>Federal</u>	<u>Total</u>
400 <u>Purchased Property Services</u>				
430 Repairs and Maintenance Services				360.00
440 Rentals				6,435.29
Total Purchased Property Services				\$6,795.29
500 <u>Other Purchased Services</u>				
530 Communications				11,434.44
Total Other Purchased Services				\$11,434.44
600 <u>Supplies</u>				
610 General Supplies				4,303.31
Total Supplies				\$4,303.31
Total 2520 Purchasing Services				\$22,533.04

LEA : 116496503     Shamokin Area SD

Printed 11/18/2016 7:52:30 AM

General Fund (10)

2530 Warehousing and Distributing Services	<u>Elementary</u>	<u>Secondary</u>	<u>Federal</u>	<u>Total</u>
100 <u>Personnel Services – Salaries</u>				
100 Personnel Services – Salaries				41,843.44
Total Personnel Services – Salaries				\$41,843.44
200 <u>Personnel Services – Employee Benefits</u>				
210 Group Insurance – Contracted Provider				7,698.38
220 Social Security Contributions				3,173.06
230 PSERS Retirement Contributions				10,812.26
260 Workers' Compensation				376.64
Total Personnel Services – Employee Benefits				\$22,060.34
Total 2530 Warehousing and Distributing Services				\$63,903.78

LEA : 116496503      Shamokin Area SD

Printed 11/18/2016 7:52:30 AM

General Fund (10)				
2540 Printing, Publishing and Duplicating Services	<u>Elementary</u>	<u>Secondary</u>	<u>Federal</u>	<u>Total</u>
400 <u>Purchased Property Services</u>				
440 Rentals				28,313.83
Total Purchased Property Services				\$28,313.83
600 <u>Supplies</u>				
610 General Supplies				1,399.44
Total Supplies				\$1,399.44
Total 2540 Printing, Publishing and Duplicating Services				\$29,713.27

LEA : 116496503     Shamokin Area SD

Printed 11/18/2016 7:52:30 AM

General Fund (10)

2590 Other Support Services – Business	<u>Elementary</u>	<u>Secondary</u>	<u>Federal</u>	<u>Total</u>
300 <u>Purchased Professional and Technical Services</u>				
322 Professional Educational Services – lus				3,800.00
Total Purchased Professional and Technical Services				\$3,800.00
500 <u>Other Purchased Services</u>				
549 Other Advertising/Public Relations				1,132.14
Total Other Purchased Services				\$1,132.14
Total 2590 Other Support Services – Business				\$4,932.14

LEA : 116496503      Shamokin Area SD

Printed 11/18/2016 7:52:30 AM

General Fund (10)				
2600 Operation and Maintenance of Plant Services	<u>Elementary</u>	<u>Secondary</u>	<u>Federal</u>	<u>Total</u>
100 <u>Personnel Services – Salaries</u>				
100 Personnel Services – Salaries				896,341.60
Total Personnel Services – Salaries				\$896,341.60
200 <u>Personnel Services – Employee Benefits</u>				
210 Group Insurance – Contracted Provider				337,569.66
220 Social Security Contributions				67,775.59
230 PSERS Retirement Contributions				222,023.76
250 Unemployment Compensation				378.70
260 Workers' Compensation				8,066.82
270 Group Insurance – Self-Insurance				36.96
290 Other Current Employee Benefits				2,195.80
Total Personnel Services – Employee Benefits				\$638,047.29
300 <u>Purchased Professional and Technical Services</u>				
330 Other Professional Services				5,175.74
350 Security / Safety Services				63,475.00
Total Purchased Professional and Technical Services				\$68,650.74
400 <u>Purchased Property Services</u>				
410 Cleaning Services				69,974.61
420 Utility Services			702.16	407,943.32
430 Repairs and Maintenance Services				48,549.94
440 Rentals				726,441.85
490 Other Purchased Property Services				7,929.50
Total Purchased Property Services			\$702.16	\$1,260,839.22
500 <u>Other Purchased Services</u>				
522 Automotive Liability Insurance				11,917.00
523 General Property and Liability Insurance				122,858.00
529 Other Insurance				34.45
530 Communications				15,423.74
549 Other Advertising/Public Relations				138.00
Total Other Purchased Services				\$150,371.19
600 <u>Supplies</u>				
610 General Supplies	53,874.79	94,657.52		148,532.31
620 Energy				135,984.21
630 Food				37.43
640 Books and Periodicals				161.40
Total Supplies		\$53,874.79	\$94,657.52	\$284,715.35
700 <u>Property</u>				
750 Equipment – Original and Additional				3,272.57
Total Property				\$3,272.57
800 <u>Other Objects</u>				
810 Dues and Fees				1,355.50

LEA : 116496503      Shamokin Area SD

Printed 11/18/2016 7:52:30 AM

General Fund (10)				
2600 Operation and Maintenance of Plant Services	<u>Elementary</u>	<u>Secondary</u>	<u>Federal</u>	<u>Total</u>
Total Other Objects				\$1,355.50
Total 2600 Operation and Maintenance of Plant Services	\$53,874.79	\$94,657.52	\$702.16	\$3,303,593.46



LEA : 116496503      Shamokin Area SD

Printed 11/18/2016 7:52:30 AM

General Fund (10)

2610 Supervision of Operation and Maintenance of Plant Services	<u>Elementary</u>	<u>Secondary</u>	<u>Federal</u>	<u>Total</u>
100 <u>Personnel Services – Salaries</u>				
100 Personnel Services – Salaries				76,853.08
<b>Total Personnel Services – Salaries</b>				<b>\$76,853.08</b>
200 <u>Personnel Services – Employee Benefits</u>				
210 Group Insurance – Contracted Provider				20,751.90
220 Social Security Contributions				5,809.05
230 PSERS Retirement Contributions				18,440.24
260 Workers' Compensation				691.61
290 Other Current Employee Benefits				2,195.80
<b>Total Personnel Services – Employee Benefits</b>				<b>\$47,888.60</b>
500 <u>Other Purchased Services</u>				
530 Communications				305.00
<b>Total Other Purchased Services</b>				<b>\$305.00</b>
800 <u>Other Objects</u>				
810 Dues and Fees				213.00
<b>Total Other Objects</b>				<b>\$213.00</b>
<b>Total 2610 Supervision of Operation and Maintenance of Plant Services</b>				<b>\$125,259.68</b>

LEA : 116496503      Shamokin Area SD

Printed 11/18/2016 7:52:30 AM

General Fund (10)				
2611 Supervision of Operation and Maintenance of Plant Services – Head of Component	<u>Elementary</u>	<u>Secondary</u>	<u>Federal</u>	<u>Total</u>
100 <u>Personnel Services – Salaries</u>				
100 Personnel Services – Salaries				76,853.08
Total Personnel Services – Salaries				\$76,853.08
200 <u>Personnel Services – Employee Benefits</u>				
210 Group Insurance – Contracted Provider				20,751.90
220 Social Security Contributions				5,809.05
230 PSERS Retirement Contributions				18,440.24
260 Workers' Compensation				691.61
290 Other Current Employee Benefits				2,195.80
Total Personnel Services – Employee Benefits				\$47,888.60
500 <u>Other Purchased Services</u>				
530 Communications				305.00
Total Other Purchased Services				\$305.00
800 <u>Other Objects</u>				
810 Dues and Fees				213.00
Total Other Objects				\$213.00
Total 2611 Supervision of Operation and Maintenance of Plant Services – Head of Component				\$125,259.68

LEA : 116496503      Shamokin Area SD

Printed 11/18/2016 7:52:30 AM

<b>General Fund (10)</b>				
<b>2620 Operation of Buildings Services</b>	<b><u>Elementary</u></b>	<b><u>Secondary</u></b>	<b><u>Federal</u></b>	<b><u>Total</u></b>
<b>100 <u>Personnel Services – Salaries</u></b>				
100 Personnel Services – Salaries				704,114.65
<b>Total Personnel Services – Salaries</b>				<b>\$704,114.65</b>
<b>200 <u>Personnel Services – Employee Benefits</u></b>				
210 Group Insurance – Contracted Provider				268,484.40
220 Social Security Contributions				53,250.90
230 PSERS Retirement Contributions				175,731.21
250 Unemployment Compensation				378.70
260 Workers' Compensation				6,336.96
270 Group Insurance – Self-Insurance				36.96
<b>Total Personnel Services – Employee Benefits</b>				<b>\$504,219.13</b>
<b>300 <u>Purchased Professional and Technical Services</u></b>				
330 Other Professional Services				5,095.74
<b>Total Purchased Professional and Technical Services</b>				<b>\$5,095.74</b>
<b>400 <u>Purchased Property Services</u></b>				
410 Cleaning Services				35,538.61
420 Utility Services			702.16	407,943.32
430 Repairs and Maintenance Services				35,430.40
440 Rentals				723,091.14
490 Other Purchased Property Services				7,529.50
<b>Total Purchased Property Services</b>			<b>\$702.16</b>	<b>\$1,209,532.97</b>
<b>500 <u>Other Purchased Services</u></b>				
523 General Property and Liability Insurance				122,858.00
529 Other Insurance				34.45
530 Communications				9,124.00
<b>Total Other Purchased Services</b>				<b>\$132,016.45</b>
<b>600 <u>Supplies</u></b>				
610 General Supplies	51,042.56	64,248.20		115,290.76
620 Energy				104,512.37
630 Food				37.43
640 Books and Periodicals				161.40
<b>Total Supplies</b>	<b>\$51,042.56</b>	<b>\$64,248.20</b>		<b>\$220,001.96</b>
<b>700 <u>Property</u></b>				
750 Equipment – Original and Additional				3,272.57
<b>Total Property</b>				<b>\$3,272.57</b>
<b>800 <u>Other Objects</u></b>				
810 Dues and Fees				1,091.00
<b>Total Other Objects</b>				<b>\$1,091.00</b>
<b>Total 2620 Operation of Buildings Services</b>	<b>\$51,042.56</b>	<b>\$64,248.20</b>	<b>\$702.16</b>	<b>\$2,779,344.47</b>

LEA : 116496503      Shamokin Area SD

Printed 11/18/2016 7:52:30 AM

General Fund (10)				
2630 Care and Upkeep of Grounds Services	<u>Elementary</u>	<u>Secondary</u>	<u>Federal</u>	<u>Total</u>
100 <u>Personnel Services – Salaries</u>				
100 Personnel Services – Salaries				67,390.00
Total Personnel Services – Salaries				\$67,390.00
200 <u>Personnel Services – Employee Benefits</u>				
210 Group Insurance – Contracted Provider				37,566.74
220 Social Security Contributions				5,071.81
230 PSERS Retirement Contributions				16,998.07
260 Workers' Compensation				606.46
Total Personnel Services – Employee Benefits				\$60,243.08
300 <u>Purchased Professional and Technical Services</u>				
330 Other Professional Services				80.00
Total Purchased Professional and Technical Services				\$80.00
400 <u>Purchased Property Services</u>				
410 Cleaning Services				34,436.00
430 Repairs and Maintenance Services				880.00
440 Rentals				1,624.71
490 Other Purchased Property Services				400.00
Total Purchased Property Services				\$37,340.71
500 <u>Other Purchased Services</u>				
530 Communications				304.99
549 Other Advertising/Public Relations				138.00
Total Other Purchased Services				\$442.99
600 <u>Supplies</u>				
610 General Supplies	1,002.55	21,873.04		22,875.59
620 Energy				16,045.89
Total Supplies	\$1,002.55	\$21,873.04		\$38,921.48
Total 2630 Care and Upkeep of Grounds Services	\$1,002.55	\$21,873.04		\$204,418.26

LEA : 116496503      Shamokin Area SD

Printed 11/18/2016 7:52:30 AM

General Fund (10)				
2640 Care and Upkeep of Equipment Services	<u>Elementary</u>	<u>Secondary</u>	<u>Federal</u>	<u>Total</u>
400 <u>Purchased Property Services</u>				
430 Repairs and Maintenance Services				760.14
440 Rentals				1,726.00
<b>Total Purchased Property Services</b>				<b>\$2,486.14</b>
500 <u>Other Purchased Services</u>				
530 Communications				34.27
<b>Total Other Purchased Services</b>				<b>\$34.27</b>
600 <u>Supplies</u>				
610 General Supplies	731.16	2,956.61		3,687.77
<b>Total Supplies</b>	<b>\$731.16</b>	<b>\$2,956.61</b>		<b>\$3,687.77</b>
<b>Total 2640 Care and Upkeep of Equipment Services</b>	<b>\$731.16</b>	<b>\$2,956.61</b>		<b>\$6,208.18</b>

LEA : 116496503      Shamokin Area SD

Printed 11/18/2016 7:52:30 AM

General Fund (10)				
2650 Vehicle Operation and Maintenance Services (Other Than Student Transportation Vehicles)	<u>Elementary</u>	<u>Secondary</u>	<u>Federal</u>	<u>Total</u>
400 <u>Purchased Property Services</u>				
430 Repairs and Maintenance Services				11,479.40
Total Purchased Property Services				\$11,479.40
500 <u>Other Purchased Services</u>				
522 Automotive Liability Insurance				11,917.00
Total Other Purchased Services				\$11,917.00
600 <u>Supplies</u>				
610 General Supplies		4,551.21		4,551.21
620 Energy				15,425.95
Total Supplies		\$4,551.21		\$19,977.16
800 <u>Other Objects</u>				
810 Dues and Fees				51.50
Total Other Objects				\$51.50
Total 2650 Vehicle Operation and Maintenance Services (Other Than Student Transportation Vehicles)		\$4,551.21		\$43,425.06

LEA : 116496503      Shamokin Area SD

Printed 11/18/2016 7:52:30 AM

General Fund (10)				
2660 Safety and Security Services	<u>Elementary</u>	<u>Secondary</u>	<u>Federal</u>	<u>Total</u>
100 <u>Personnel Services – Salaries</u>				
100 Personnel Services – Salaries				47,833.87
Total Personnel Services – Salaries				\$47,833.87
200 <u>Personnel Services – Employee Benefits</u>				
210 Group Insurance – Contracted Provider				10,766.62
220 Social Security Contributions				3,632.35
230 PSERS Retirement Contributions				10,815.48
260 Workers' Compensation				430.44
Total Personnel Services – Employee Benefits				\$25,644.89
300 <u>Purchased Professional and Technical Services</u>				
350 Security / Safety Services				63,475.00
Total Purchased Professional and Technical Services				\$63,475.00
500 <u>Other Purchased Services</u>				
530 Communications				5,655.48
Total Other Purchased Services				\$5,655.48
600 <u>Supplies</u>				
610 General Supplies	1,098.52	909.89		2,008.41
Total Supplies	\$1,098.52	\$909.89		\$2,008.41
Total 2660 Safety and Security Services	\$1,098.52	\$909.89		\$144,617.65

LEA : 116496503      Shamokin Area SD

Printed 11/18/2016 7:52:30 AM

General Fund (10)

2690 Other Operation and Maintenance of Plant Services	<u>Elementary</u>	<u>Secondary</u>	<u>Federal</u>	<u>Total</u>
100 <u>Personnel Services – Salaries</u>				
100 Personnel Services – Salaries				150.00
Total Personnel Services – Salaries				\$150.00
200 <u>Personnel Services – Employee Benefits</u>				
220 Social Security Contributions				11.48
230 PSERS Retirement Contributions				38.76
260 Workers’ Compensation				1.35
Total Personnel Services – Employee Benefits				\$51.59
600 <u>Supplies</u>				
610 General Supplies		118.57		118.57
Total Supplies		\$118.57		\$118.57
Total 2690 Other Operation and Maintenance of Plant Services		\$118.57		\$320.16



LEA : 116496503      Shamokin Area SD

Printed 11/18/2016 7:52:30 AM

General Fund (10)				
2700 Student Transportation Services	<u>Elementary</u>	<u>Secondary</u>	<u>Federal</u>	<u>Total</u>
300 <u>Purchased Professional and Technical Services</u>				
330 Other Professional Services				273.36
390 Other Purchased Professional and Technical Services				1,092.00
Total Purchased Professional and Technical Services				\$1,365.36
500 <u>Other Purchased Services</u>				
513 Contracted Carriers			1,320.00	1,171,668.00
516 Student Transportation Services From the IU				50,484.70
522 Automotive Liability Insurance				(822.00)
Total Other Purchased Services			\$1,320.00	\$1,221,330.70
Total 2700 Student Transportation Services			\$1,320.00	\$1,222,696.06

LEA : 116496503      Shamokin Area SD

Printed 11/18/2016 7:52:30 AM

General Fund (10)				
2720 Vehicle Operation Services	<u>Elementary</u>	<u>Secondary</u>	<u>Federal</u>	<u>Total</u>
300 <u>Purchased Professional and Technical Services</u>				
330 Other Professional Services				273.36
390 Other Purchased Professional and Technical Services				1,092.00
Total Purchased Professional and Technical Services				\$1,365.36
500 <u>Other Purchased Services</u>				
513 Contracted Carriers			1,320.00	1,066,336.69
Total Other Purchased Services			\$1,320.00	\$1,066,336.69
Total 2720 Vehicle Operation Services			\$1,320.00	\$1,067,702.05

LEA : 116496503     Shamokin Area SD

Printed 11/18/2016 7:52:30 AM

General Fund (10)

2750 Nonpublic Transportation	<u>Elementary</u>	<u>Secondary</u>	<u>Federal</u>	<u>Total</u>
500 <u>Other Purchased Services</u>				
513 Contracted Carriers				105,331.31
Total Other Purchased Services				\$105,331.31
Total 2750 Nonpublic Transportation				\$105,331.31

LEA : 116496503     Shamokin Area SD

Printed 11/18/2016 7:52:30 AM

General Fund (10)

2790 Other Student Transportation Services

Elementary

Secondary

Federal

Total

500 Other Purchased Services

516 Student Transportation Services From the IU

50,484.70

522 Automotive Liability Insurance

(822.00)

<b>Total Other Purchased Services</b>				<b>\$49,662.70</b>
<b>Total 2790 Other Student Transportation Services</b>				<b>\$49,662.70</b>

LEA : 116496503      Shamokin Area SD

Printed 11/18/2016 7:52:30 AM

<b>General Fund (10)</b>				
<b>2800 Support Services – Central</b>				
	<u>Elementary</u>	<u>Secondary</u>	<u>Federal</u>	<u>Total</u>
<b>100 <u>Personnel Services – Salaries</u></b>				
100 Personnel Services – Salaries			19,936.80	126,383.85
<b>Total Personnel Services – Salaries</b>			<b>\$19,936.80</b>	<b>\$126,383.85</b>
<b>200 <u>Personnel Services – Employee Benefits</u></b>				
210 Group Insurance – Contracted Provider			4,273.09	31,949.99
220 Social Security Contributions			1,528.74	9,616.34
230 PSERS Retirement Contributions			4,865.40	30,979.64
260 Workers' Compensation			179.29	1,137.34
270 Group Insurance – Self-Insurance				23,962.08
<b>Total Personnel Services – Employee Benefits</b>			<b>\$10,846.52</b>	<b>\$97,645.39</b>
<b>300 <u>Purchased Professional and Technical Services</u></b>				
324 Professional Educational Services – Employee Training and Development Services				3,191.50
329 Professional Educational Services – Other			37,195.48	37,195.48
330 Other Professional Services				3,877.50
<b>Total Purchased Professional and Technical Services</b>			<b>\$37,195.48</b>	<b>\$44,264.48</b>
<b>400 <u>Purchased Property Services</u></b>				
430 Repairs and Maintenance Services				10,521.38
440 Rentals				52,680.63
<b>Total Purchased Property Services</b>				<b>\$63,202.01</b>
<b>500 <u>Other Purchased Services</u></b>				
530 Communications				470.08
580 Travel				1,197.03
<b>Total Other Purchased Services</b>				<b>\$1,667.11</b>
<b>600 <u>Supplies</u></b>				
610 General Supplies				41,380.62
650 Supplies & Fees – Technology Related				6,527.14
<b>Total Supplies</b>				<b>\$47,907.76</b>
<b>700 <u>Property</u></b>				
750 Equipment – Original and Additional				210,200.70
760 Equipment – Replacement				347,514.34
<b>Total Property</b>				<b>\$557,715.04</b>
<b>800 <u>Other Objects</u></b>				
810 Dues and Fees				490.00
<b>Total Other Objects</b>				<b>\$490.00</b>
<b>Total 2800 Support Services – Central</b>			<b>\$67,978.80</b>	<b>\$939,275.64</b>

LEA : 116496503      Shamokin Area SD

Printed 11/18/2016 7:52:30 AM

General Fund (10)

2810 Planning, Research, Development and Evaluation Services	<u>Elementary</u>	<u>Secondary</u>	<u>Federal</u>	<u>Total</u>
100 <u>Personnel Services – Salaries</u>				
100 Personnel Services – Salaries				106,447.05
<b>Total Personnel Services – Salaries</b>				<b>\$106,447.05</b>
200 <u>Personnel Services – Employee Benefits</u>				
210 Group Insurance – Contracted Provider				27,676.90
220 Social Security Contributions				8,087.60
230 PSERS Retirement Contributions				26,114.24
260 Workers' Compensation				958.05
270 Group Insurance – Self-Insurance				23,962.08
<b>Total Personnel Services – Employee Benefits</b>				<b>\$86,798.87</b>
300 <u>Purchased Professional and Technical Services</u>				
330 Other Professional Services				3,877.50
<b>Total Purchased Professional and Technical Services</b>				<b>\$3,877.50</b>
400 <u>Purchased Property Services</u>				
430 Repairs and Maintenance Services				10,521.38
440 Rentals				52,680.63
<b>Total Purchased Property Services</b>				<b>\$63,202.01</b>
500 <u>Other Purchased Services</u>				
530 Communications				470.08
<b>Total Other Purchased Services</b>				<b>\$470.08</b>
600 <u>Supplies</u>				
610 General Supplies				41,380.62
650 Supplies & Fees – Technology Related				6,527.14
<b>Total Supplies</b>				<b>\$47,907.76</b>
700 <u>Property</u>				
750 Equipment – Original and Additional				210,200.70
760 Equipment – Replacement				347,514.34
<b>Total Property</b>				<b>\$557,715.04</b>
<b>Total 2810 Planning, Research, Development and Evaluation Services</b>				<b>\$866,418.31</b>

LEA : 116496503      Shamokin Area SD

Printed 11/18/2016 7:52:30 AM

General Fund (10)				
2830 Staff Services	<u>Elementary</u>	<u>Secondary</u>	<u>Federal</u>	<u>Total</u>
300 <u>Purchased Professional and Technical Services</u>				
324 Professional Educational Services – Employee Training and Development Services				3,191.50
Total Purchased Professional and Technical Services				\$3,191.50
500 <u>Other Purchased Services</u>				
580 Travel				1,197.03
Total Other Purchased Services				\$1,197.03
800 <u>Other Objects</u>				
810 Dues and Fees				490.00
Total Other Objects				\$490.00
Total 2830 Staff Services				\$4,878.53

LEA : 116496503      Shamokin Area SD

Printed 11/18/2016 7:52:30 AM

General Fund (10)				
2832 Recruitment and Placement Services	<u>Elementary</u>	<u>Secondary</u>	<u>Federal</u>	<u>Total</u>
800 <u>Other Objects</u>				
810 Dues and Fees				250.00
Total Other Objects				\$250.00
Total 2832 Recruitment and Placement Services				\$250.00



LEA : 116496503     Shamokin Area SD

Printed 11/18/2016 7:52:30 AM

General Fund (10)

2834 Staff Development Services – Non-Instructional, Certified Staff Only	<u>Elementary</u>	<u>Secondary</u>	<u>Federal</u>	<u>Total</u>
300 <u>Purchased Professional and Technical Services</u>				
324 Professional Educational Services – Employee Training and Development Services				1,001.50
Total Purchased Professional and Technical Services				\$1,001.50
500 <u>Other Purchased Services</u>				
580 Travel				317.46
Total Other Purchased Services				\$317.46
Total 2834 Staff Development Services – Non-Instructional, Certified Staff Only				\$1,318.96

LEA : 116496503     Shamokin Area SD

Printed 11/18/2016 7:52:30 AM

General Fund (10)

2836 Staff Development Services – Non-Instructional, Non-Certified Staff Only	<u>Elementary</u>	<u>Secondary</u>	<u>Federal</u>	<u>Total</u>
300 <u>Purchased Professional and Technical Services</u>				
324 Professional Educational Services – Employee Training and Development Services				2,190.00
Total Purchased Professional and Technical Services				\$2,190.00
500 <u>Other Purchased Services</u>				
580 Travel				879.57
Total Other Purchased Services				\$879.57
800 <u>Other Objects</u>				
810 Dues and Fees				240.00
Total Other Objects				\$240.00
Total 2836 Staff Development Services – Non-Instructional, Non-Certified Staff Only				\$3,309.57

LEA : 116496503      Shamokin Area SD

Printed 11/18/2016 7:52:30 AM

General Fund (10)

2850 State and Federal Agency Liaison Services	<u>Elementary</u>	<u>Secondary</u>	<u>Federal</u>	<u>Total</u>
100 <u>Personnel Services – Salaries</u>				
100 Personnel Services – Salaries			19,936.80	19,936.80
<b>Total Personnel Services – Salaries</b>			<b>\$19,936.80</b>	<b>\$19,936.80</b>
200 <u>Personnel Services – Employee Benefits</u>				
210 Group Insurance – Contracted Provider			4,273.09	4,273.09
220 Social Security Contributions			1,528.74	1,528.74
230 PSERS Retirement Contributions			4,865.40	4,865.40
260 Workers' Compensation			179.29	179.29
<b>Total Personnel Services – Employee Benefits</b>			<b>\$10,846.52</b>	<b>\$10,846.52</b>
300 <u>Purchased Professional and Technical Services</u>				
329 Professional Educational Services – Other			37,195.48	37,195.48
<b>Total Purchased Professional and Technical Services</b>			<b>\$37,195.48</b>	<b>\$37,195.48</b>
<b>Total 2850 State and Federal Agency Liaison Services</b>			<b>\$67,978.80</b>	<b>\$67,978.80</b>

LEA : 116496503      Shamokin Area SD

Printed 11/18/2016 7:52:33 AM

<b>General Fund (10)</b>	
<b>3000 Operation of Non-Instructional Services</b>	<b><u>Total</u></b>
<b>100 <u>Personnel Services – Salaries</u></b>	
100 Personnel Services – Salaries	213,732.07
<b>Total Personnel Services – Salaries</b>	<b>\$213,732.07</b>
<b>200 <u>Personnel Services – Employee Benefits</u></b>	
210 Group Insurance – Contracted Provider	14,303.79
220 Social Security Contributions	16,300.93
230 PSERS Retirement Contributions	34,171.85
250 Unemployment Compensation	1,582.88
260 Workers’ Compensation	1,924.06
<b>Total Personnel Services – Employee Benefits</b>	<b>\$68,283.51</b>
<b>300 <u>Purchased Professional and Technical Services</u></b>	
330 Other Professional Services	36,562.69
390 Other Purchased Professional and Technical Services	35,000.00
<b>Total Purchased Professional and Technical Services</b>	<b>\$71,562.69</b>
<b>400 <u>Purchased Property Services</u></b>	
410 Cleaning Services	1,576.50
430 Repairs and Maintenance Services	374.50
440 Rentals	3,315.00
<b>Total Purchased Property Services</b>	<b>\$5,266.00</b>
<b>500 <u>Other Purchased Services</u></b>	
510 Student Transportation Services	39,605.21
520 Insurance – General	17,400.00
530 Communications	305.00
549 Other Advertising/Public Relations	420.80
550 Printing and Binding	368.75
580 Travel	1,906.91
<b>Total Other Purchased Services</b>	<b>\$60,006.67</b>
<b>600 <u>Supplies</u></b>	
610 General Supplies	56,849.62
630 Food	286.24
640 Books and Periodicals	2,949.88
<b>Total Supplies</b>	<b>\$60,085.74</b>
<b>700 <u>Property</u></b>	
760 Equipment – Replacement	9,891.49
<b>Total Property</b>	<b>\$9,891.49</b>
<b>800 <u>Other Objects</u></b>	
810 Dues and Fees	9,669.70
860 Grants To Municipal and Community Service Organizations	2,200.00
890 Miscellaneous Expenditures	157.40
<b>Total Other Objects</b>	<b>\$12,027.10</b>
<b>Total 3000 Operation of Non-Instructional Services</b>	<b>\$500,855.27</b>

LEA : 116496503      Shamokin Area SD

Printed 11/18/2016 7:52:33 AM

General Fund (10)				
3200 Student Activities				
	<u>Elementary</u>	<u>Secondary</u>	<u>Federal</u>	<u>Total</u>
100 <u>Personnel Services – Salaries</u>				
100 Personnel Services – Salaries				212,365.57
Total Personnel Services – Salaries				\$212,365.57
200 <u>Personnel Services – Employee Benefits</u>				
210 Group Insurance – Contracted Provider				14,303.79
220 Social Security Contributions				16,196.40
230 PSERS Retirement Contributions				33,818.75
250 Unemployment Compensation				1,582.88
260 Workers' Compensation				1,911.77
Total Personnel Services – Employee Benefits				\$67,813.59
300 <u>Purchased Professional and Technical Services</u>				
330 Other Professional Services				36,562.69
390 Other Purchased Professional and Technical Services				35,000.00
Total Purchased Professional and Technical Services				\$71,562.69
400 <u>Purchased Property Services</u>				
410 Cleaning Services				1,576.50
430 Repairs and Maintenance Services				374.50
440 Rentals				3,315.00
Total Purchased Property Services				\$5,266.00
500 <u>Other Purchased Services</u>				
510 Student Transportation Services				39,605.21
520 Insurance – General				17,400.00
530 Communications				305.00
549 Other Advertising/Public Relations				420.80
550 Printing and Binding				368.75
580 Travel				1,906.91
Total Other Purchased Services				\$60,006.67
600 <u>Supplies</u>				
610 General Supplies				53,921.93
630 Food				54.74
Total Supplies				\$53,976.67
700 <u>Property</u>				
760 Equipment – Replacement				9,891.49
Total Property				\$9,891.49
800 <u>Other Objects</u>				
810 Dues and Fees				9,669.70
890 Miscellaneous Expenditures				157.40
Total Other Objects				\$9,827.10
Total 3200 Student Activities				\$490,709.78

LEA : 116496503      Shamokin Area SD

Printed 11/18/2016 7:52:33 AM

General Fund (10)

3300 Community Services

	<u>Elementary</u>	<u>Secondary</u>	<u>Federal</u>	<u>Total</u>
<b>100 <u>Personnel Services – Salaries</u></b>				
100 Personnel Services – Salaries			1,366.50	1,366.50
<b>Total Personnel Services – Salaries</b>			<b>\$1,366.50</b>	<b>\$1,366.50</b>
<b>200 <u>Personnel Services – Employee Benefits</u></b>				
220 Social Security Contributions			104.53	104.53
230 PSERS Retirement Contributions			353.10	353.10
260 Workers’ Compensation			12.29	12.29
<b>Total Personnel Services – Employee Benefits</b>			<b>\$469.92</b>	<b>\$469.92</b>
<b>600 <u>Supplies</u></b>				
610 General Supplies			2,626.93	2,626.93
630 Food			231.50	231.50
640 Books and Periodicals			2,949.88	2,949.88
<b>Total Supplies</b>			<b>\$5,808.31</b>	<b>\$5,808.31</b>
<b>800 <u>Other Objects</u></b>				
860 Grants To Municipal and Community Service Organizations				2,200.00
<b>Total Other Objects</b>				<b>\$2,200.00</b>
<b>Total 3300 Community Services</b>			<b>\$7,644.73</b>	<b>\$9,844.73</b>

LEA : 116496503     Shamokin Area SD

Printed 11/18/2016 7:52:33 AM

General Fund (10)				
3400 Scholarships and Awards	<u>Elementary</u>	<u>Secondary</u>	<u>Federal</u>	<u>Total</u>
600 <u>Supplies</u>				
610 General Supplies				300.76
Total Supplies				\$300.76
Total 3400 Scholarships and Awards				\$300.76

LEA : 116496503     Shamokin Area SD

Printed 11/18/2016 7:52:34 AM

General Fund (10)

4000 Facilities Acquisition, Construction and Improvement Services

Total

700 Property

780 Infrastructure Assets

5,469.00

Total Property

\$5,469.00

Total 4000 Facilities Acquisition, Construction and Improvement Services

\$5,469.00



LEA : 116496503     Shamokin Area SD

Printed 11/18/2016 7:52:34 AM

General Fund (10)

4600 Existing Building Improvement Services	<u>Elementary</u>	<u>Secondary</u>	<u>Federal</u>	<u>Total</u>
700 <u>Property</u>				
780 Infrastructure Assets				5,469.00
Total Property				\$5,469.00
Total 4600 Existing Building Improvement Services				\$5,469.00

LEA : 116496503     Shamokin Area SD

Printed 11/18/2016 7:52:35 AM

General Fund (10)	
5000 Other Expenditures and Financing Uses	<u>Total</u>
900 <u>Other Uses of Funds</u>	
930 Fund Transfers	56,469.02
Total Other Uses of Funds	\$56,469.02
Total 5000 Other Expenditures and Financing Uses	\$56,469.02

LEA : 116496503     Shamokin Area SD

Printed 11/18/2016 7:52:35 AM

General Fund (10)

5200 Interfund Transfers – Out	<u>Elementary</u>	<u>Secondary</u>	<u>Federal</u>	<u>Total</u>
900 <u>Other Uses of Funds</u>				
930 Fund Transfers				56,469.02
Total Other Uses of Funds				\$56,469.02
Total 5200 Interfund Transfers – Out				\$56,469.02

LEA : 116496503     Shamokin Area SD

Printed 11/18/2016 7:52:35 AM

General Fund (10)

5250 Enterprise Fund Transfers	<u>Elementary</u>	<u>Secondary</u>	<u>Federal</u>	<u>Total</u>
900 <u>Other Uses of Funds</u>				
930 Fund Transfers				56,469.02
Total Other Uses of Funds				\$56,469.02
Total 5250 Enterprise Fund Transfers				\$56,469.02

LEA : 116496503      Shamokin Area SD

Printed 11/18/2016 7:52:32 AM

Capital Reserve Fund - § 1431 (32)

2000 Support Services		<u>Total</u>
400 <u>Purchased Property Services</u>		
410	Cleaning Services	10,950.00
420	Utility Services	2,210.00
430	Repairs and Maintenance Services	37,959.72
450	Construction Services	23,991.00
Total Purchased Property Services		\$75,110.72
700 <u>Property</u>		
750	Equipment – Original and Additional	6,750.00
760	Equipment – Replacement	19,178.00
Total Property		\$25,928.00
800 <u>Other Objects</u>		
810	Dues and Fees	3,484.74
890	Miscellaneous Expenditures	3,631.42
Total Other Objects		\$7,116.16
Total 2000 Support Services		\$108,154.88

LEA : 116496503     Shamokin Area SD

Printed 11/18/2016 7:52:32 AM

Capital Reserve Fund - § 1431 (32)

2300 Support Services – Administration

Elementary

Secondary

Federal

Total

800 Other Objects

810 Dues and Fees

3,484.74

Total Other Objects				\$3,484.74
---------------------	--	--	--	------------

Total 2300 Support Services – Administration				\$3,484.74
--	--	--	--	------------

LEA : 116496503     Shamokin Area SD

Printed 11/18/2016 7:52:32 AM

Capital Reserve Fund - § 1431 (32)

2390 Other Administration Services

	<u>Elementary</u>	<u>Secondary</u>	<u>Federal</u>	<u>Total</u>
800 <u>Other Objects</u>				
810 Dues and Fees				3,484.74
<b>Total Other Objects</b>				<b>\$3,484.74</b>
<b>Total 2390 Other Administration Services</b>				<b>\$3,484.74</b>

LEA : 116496503      Shamokin Area SD

Printed 11/18/2016 7:52:32 AM

Capital Reserve Fund - § 1431 (32)

2600 Operation and Maintenance of Plant Services	<u>Elementary</u>	<u>Secondary</u>	<u>Federal</u>	<u>Total</u>
400 <u>Purchased Property Services</u>				
410 Cleaning Services				10,950.00
420 Utility Services				2,210.00
430 Repairs and Maintenance Services				37,959.72
450 Construction Services				23,991.00
<b>Total Purchased Property Services</b>				<b>\$75,110.72</b>
700 <u>Property</u>				
750 Equipment – Original and Additional				6,750.00
760 Equipment – Replacement				19,178.00
<b>Total Property</b>				<b>\$25,928.00</b>
800 <u>Other Objects</u>				
890 Miscellaneous Expenditures				3,631.42
<b>Total Other Objects</b>				<b>\$3,631.42</b>
<b>Total 2600 Operation and Maintenance of Plant Services</b>				<b>\$104,670.14</b>



LEA : 116496503      Shamokin Area SD

Printed 11/18/2016 7:52:32 AM

Capital Reserve Fund - § 1431 (32)

2620 Operation of Buildings Services

	<u>Elementary</u>	<u>Secondary</u>	<u>Federal</u>	<u>Total</u>
<b>400 <u>Purchased Property Services</u></b>				
420 Utility Services				2,210.00
430 Repairs and Maintenance Services				37,959.72
<b>Total Purchased Property Services</b>				<b>\$40,169.72</b>
<b>700 <u>Property</u></b>				
760 Equipment – Replacement				19,178.00
<b>Total Property</b>				<b>\$19,178.00</b>
<b>800 <u>Other Objects</u></b>				
890 Miscellaneous Expenditures				3,631.42
<b>Total Other Objects</b>				<b>\$3,631.42</b>
<b>Total 2620 Operation of Buildings Services</b>				<b>\$62,979.14</b>

LEA : 116496503     Shamokin Area SD

Printed 11/18/2016 7:52:32 AM

Capital Reserve Fund - § 1431 (32)

2630 Care and Upkeep of Grounds Services

<u>Elementary</u>	<u>Secondary</u>	<u>Federal</u>	<u>Total</u>
-------------------	------------------	----------------	--------------

400 Purchased Property Services

410 Cleaning Services			10,950.00
-----------------------	--	--	-----------

450 Construction Services			23,991.00
---------------------------	--	--	-----------

Total Purchased Property Services			\$34,941.00
Total 2630 Care and Upkeep of Grounds Services			\$34,941.00

LEA : 116496503     Shamokin Area SD

Printed 11/18/2016 7:52:32 AM

Capital Reserve Fund - § 1431 (32)

2650 Vehicle Operation and Maintenance Services (Other Than Student Transportation Vehicles)	<u>Elementary</u>	<u>Secondary</u>	<u>Federal</u>	<u>Total</u>
700 <u>Property</u>				
750 Equipment – Original and Additional				6,750.00
Total Property				\$6,750.00
Total 2650 Vehicle Operation and Maintenance Services (Other Than Student Transportation Vehicles)				\$6,750.00

LEA : 116496503      Shamokin Area SD

Printed 11/18/2016 7:52:36 AM

Capital Reserve Fund - § 1431 (32)

5000 Other Expenditures and Financing Uses

Total

800 Other Objects

830 Interest	279,467.28
--------------	------------

<b>Total Other Objects</b>	<b>\$279,467.28</b>
----------------------------	---------------------

900 Other Uses of Funds

910 Redemption of Principal	226,000.00
-----------------------------	------------

<b>Total Other Uses of Funds</b>	<b>\$226,000.00</b>
----------------------------------	---------------------

<b>Total 5000 Other Expenditures and Financing Uses</b>	<b>\$505,467.28</b>
---	---------------------

LEA : 116496503     Shamokin Area SD

Printed 11/18/2016 7:52:36 AM

Capital Reserve Fund - § 1431 (32)

5100 Debt Service / Other Expenditures and Financing Uses	<u>Elementary</u>	<u>Secondary</u>	<u>Federal</u>	<u>Total</u>
800 <u>Other Objects</u>				
830 Interest			209,010.30	279,467.28
Total Other Objects			\$209,010.30	\$279,467.28
900 <u>Other Uses of Funds</u>				
910 Redemption of Principal			226,000.00	226,000.00
Total Other Uses of Funds			\$226,000.00	\$226,000.00
Total 5100 Debt Service / Other Expenditures and Financing Uses			\$435,010.30	\$505,467.28

LEA : 116496503     Shamokin Area SD

Printed 11/18/2016 7:52:36 AM

Capital Reserve Fund - § 1431 (32)

5110 Debt Service	<u>Elementary</u>	<u>Secondary</u>	<u>Federal</u>	<u>Total</u>
800 <u>Other Objects</u>				
830 Interest			209,010.30	279,467.28
Total Other Objects			\$209,010.30	\$279,467.28
900 <u>Other Uses of Funds</u>				
910 Redemption of Principal			226,000.00	226,000.00
Total Other Uses of Funds			\$226,000.00	\$226,000.00
Total 5110 Debt Service			\$435,010.30	\$505,467.28

LEA : 116496503      Shamokin Area SD

Printed 11/18/2016 7:52:34 AM

Other Capital Projects Fund (39)

4000 Facilities Acquisition, Construction and Improvement Services

Total

400 Purchased Property Services

450 Construction Services	3,337,469.19
Total Purchased Property Services	\$3,337,469.19
Total 4000 Facilities Acquisition, Construction and Improvement Services	\$3,337,469.19

LEA : 116496503     Shamokin Area SD

Printed 11/18/2016 7:52:34 AM

Other Capital Projects Fund (39)

4600 Existing Building Improvement Services

Elementary

Secondary

Federal

Total

400 Purchased Property Services

450 Construction Services

3,337,469.19

Total Purchased Property Services				\$3,337,469.19
-----------------------------------	--	--	--	----------------

Total 4600 Existing Building Improvement Services				\$3,337,469.19
---	--	--	--	----------------



LEA : 116496503      Shamokin Area SD

Printed 11/18/2016 7:52:37 AM

	General Fund(10)	Public Purpose Trust(27)	Other Compt Approved (28)	Athletic / Activity(29)	Capital Reserve (690. 1850)(31)
<b>1000 Instruction</b>					
1100 Regular Programs - Elementary / Secondary	11,944,270.45				
1200 Special Programs - Elementary / Secondary	4,298,611.00				
1300 Vocational Education	1,432,001.13				
1400 Other Instructional Programs - Elementary / Secondary	816,882.97				
1800 Pre-Kindergarten	240,292.40				
<b>Total Instruction</b>	<b>\$18,732,057.95</b>				
<b>2000 Support Services</b>					
2100 Support Services - Students	575,636.37				
2200 Support Services - Instructional Staff	536,431.05				
2300 Support Services - Administration	1,520,722.19				
2400 Support Services - Pupil Health	414,232.79				
2500 Support Services - Business	687,136.11				
2600 Operation and Maintenance of Plant Services	3,303,593.46				
2700 Student Transportation Services	1,222,696.06				
2800 Support Services - Central	939,275.64				
<b>Total Support Services</b>	<b>\$9,199,723.67</b>				
<b>3000 Operation of Non-Instructional Services</b>					
3200 Student Activities	490,709.78				
3300 Community Services	9,844.73				
3400 Scholarships and Awards	300.76				
<b>Total Operation of Non-Instructional Services</b>	<b>\$500,855.27</b>				
<b>4000 Facilities Acquisition, Construction and Improvement Services</b>					
4600 Existing Building Improvement Services	5,469.00				
<b>Total Facilities Acquisition, Construction and Improvement Services</b>	<b>\$5,469.00</b>				
<b>5000 Other Expenditures and Financing Uses</b>					
5100 Debt Service / Other Expenditures and Financing Uses					
5200 Interfund Transfers - Out	56,469.02				
<b>Total Other Expenditures and Financing Uses</b>	<b>\$56,469.02</b>				
<b>TOTAL ACTUAL EXPENDITURES &amp; OTHER FINANCING USES</b>	<b>\$28,494,574.91</b>				

LEA : 116496503     Shamokin Area SD

Printed 11/18/2016 7:52:37 AM

	<u>Capital Reserve (1431)(32)</u>	<u>Other Capital Projects Fund(39)</u>	<u>Debt Service(40)</u>	<u>Permanent(90)</u>	<u>Total</u>
<b>1000 <u>Instruction</u></b>					
1100 Regular Programs - Elementary / Secondary					11,944,270.45
1200 Special Programs - Elementary / Secondary					4,298,611.00
1300 Vocational Education					1,432,001.13
1400 Other Instructional Programs - Elementary / Secondary					816,882.97
1800 Pre-Kindergarten					240,292.40
<b>Total Instruction</b>					<b>\$18,732,057.95</b>
<b>2000 <u>Support Services</u></b>					
2100 Support Services - Students					575,636.37
2200 Support Services - Instructional Staff					536,431.05
2300 Support Services - Administration	3,484.74				1,524,206.93
2400 Support Services - Pupil Health					414,232.79
2500 Support Services - Business					687,136.11
2600 Operation and Maintenance of Plant Services	104,670.14				3,408,263.60
2700 Student Transportation Services					1,222,696.06
2800 Support Services - Central					939,275.64
<b>Total Support Services</b>	<b>\$108,154.88</b>				<b>\$9,307,878.55</b>
<b>3000 <u>Operation of Non-Instructional Services</u></b>					
3200 Student Activities					490,709.78
3300 Community Services					9,844.73
3400 Scholarships and Awards					300.76
<b>Total Operation of Non-Instructional Services</b>					<b>\$500,855.27</b>
<b>4000 <u>Facilities Acquisition, Construction and Improvement Services</u></b>					
4600 Existing Building Improvement Services		3,337,469.19			3,342,938.19
<b>Total Facilities Acquisition, Construction and Improvement Services</b>		<b>\$3,337,469.19</b>			<b>\$3,342,938.19</b>
<b>5000 <u>Other Expenditures and Financing Uses</u></b>					
5100 Debt Service / Other Expenditures and Financing Uses	505,467.28				505,467.28
5200 Interfund Transfers - Out					56,469.02
<b>Total Other Expenditures and Financing Uses</b>	<b>\$505,467.28</b>				<b>\$561,936.30</b>
<b>TOTAL ACTUAL EXPENDITURES &amp; OTHER FINANCING USES</b>	<b>\$613,622.16</b>	<b>\$3,337,469.19</b>			<b>\$32,445,666.26</b>

LEA : 116496503      Shamokin Area SD

Printed 11/18/2016 7:52:40 AM

PSERS Salary Data (Salary Data should relate to the General Fund only)

Amount	Description	Amount
	Total Salary Base for salaries subject to PSERS withholding	11,231,915.00
	Total Federally Funded salaries subject to PSERS withholding	756,776.39

Title I Expenditure Data

Amount	Description	Amount
	Expenditures Funded with Current Title I Funds	1,001,861.75
	Expenditures Funded with Carry over Title I Funds	7,569.00
Total	Title I Expenditure Data	\$1,009,430.75

Title I ARRA Amount

Amount	Description	Amount
	Portion of Total Title I Expenditures funded with ARRA Title I	

Benefits for Staff Relative to Collective Bargaining Agreements

	OBJECT	COVERED	NOT COVERED	TOTAL
10 General Fund				
	211 Medical Insurance	3,360,413.24		3,360,413.24
	212 Dental Insurance	126,593.20		126,593.20
	215 Eye Care Insurance	32,022.25		32,022.25
	216 Prescription Insurance			
	271 Self-Insurance Medical Benefits	35,312.25		35,312.25
	272 Self-Insurance Dental Benefits			
	275 Self-Insurance Eye Care Benefits	176.53		176.53
	276 Self-Insurance Prescription Benefits			
	FUND TOTAL	\$3,554,517.47		\$3,554,517.47
50 Enterprise Fund	No Self Insurance data to report			
	211 Medical Insurance	15,902.00		15,902.00
	212 Dental Insurance	483.48		483.48
	215 Eye Care Insurance	147.84		147.84
	216 Prescription Insurance			
	271 Self-Insurance Medical Benefits			
	272 Self-Insurance Dental Benefits			
	275 Self-Insurance Eye Care Benefits			
	276 Self-Insurance Prescription Benefits			
	FUND TOTAL	\$16,533.32		\$16,533.32
60 Internal Service Fund	No Self Insurance data to report			
	211 Medical Insurance			
	212 Dental Insurance			
	215 Eye Care Insurance			
	216 Prescription Insurance			
	271 Self-Insurance Medical Benefits			
	272 Self-Insurance Dental Benefits			
	275 Self-Insurance Eye Care Benefits			
	276 Self-Insurance Prescription Benefits			
	FUND TOTAL			
Total of All Funds		\$3,571,050.79		\$3,571,050.79

LEA : 116496503      Shamokin Area SD

Printed 11/18/2016 7:52:41 AM

Function	Special Education (Prior Year)	Nonspecial Education (Prior Year)	Total (Prior Year)	Special Education (Current Year)	Nonspecial Education (Current Year)	Total (Current Year)
2120 Guidance Services	57,288.22	284,279.30	341,567.52	62,325.02	251,902.37	314,227.39
2140 Psychological Services	23,496.89	116,597.76	140,094.65	19,447.70	78,602.80	98,050.50
2150 Speech Pathology and Audiology Services						
2160 Social Work Services	27,295.16	135,445.81	162,740.97	32,360.40	130,792.77	163,153.17
2260 Instruction and Curriculum Development Services	72,228.99	358,419.34	430,648.33	84,729.26	342,454.80	427,184.06
2350 Legal and Accounting Services	9,666.12	47,965.85	57,631.97	11,609.93	46,924.49	58,534.42
2420 Medical Services	1,038.57	5,153.68	6,192.25	1,262.91	5,104.35	6,367.26
2440 Nursing Services	52,153.48	258,799.33	310,952.81	71,059.34	287,204.36	358,263.70
2700 Student Transportation Services	205,083.92	1,017,680.57	1,222,764.49	242,514.04	980,182.02	1,222,696.06
Total	\$448,251.35	\$2,224,341.64	\$2,672,592.99	\$525,308.60	\$2,123,167.96	\$2,648,476.56

LEA : 116496503     Shamokin Area SD

Printed 11/18/2016 7:52:42 AM

(PRINCIPAL AMOUNTS ONLY)

**ALL GOVERNMENTAL FUND TYPES**

	Short-Term Borrowing	General Obligation Bonds/Notes	Authority Building Obligations	Other Long-Term Debt	Other Post- Employment Benefits (OPEB)	Compensated Absences	Net Pension Liability	Total
1. Debt at Beginning of Fiscal Year		7,890,000.00			75,265.00	284,420.00	42,657,000.00	50,906,685.00
2. Additional Debt Incurred During Year					395,055.00	98,342.00		493,397.00
3. Retirements and Repayments		226,000.00			380,613.00			606,613.00
4. Debt at End of Fiscal Year		7,664,000.00			89,707.00	382,762.00	42,657,000.00	50,793,469.00
5. Accreted Interest at End Of Fiscal Year								
6. Total Debt and Accreted Interest		7,664,000.00			89,707.00	382,762.00	42,657,000.00	50,793,469.00
7. Current Portion P&I - Due within 1 year		371,291.00				25,000.00		396,291.00
8. Interest Paid during current fiscal year		279,467.28						279,467.28

(PRINCIPAL AMOUNTS ONLY)

**ALL PROPRIETARY FUND TYPES**

1. Debt at Beginning of Fiscal Year
2. Additional Debt Incurred During Year
3. Retirements and Repayments
4. Debt at End of Fiscal Year
5. Accreted Interest at End Of Fiscal Year
6. Total Debt and Accreted Interest
7. Current Portion P&I - Due within 1 year
8. Interest Paid during current fiscal year

LEA : 116496503      Shamokin Area SD

Printed 11/18/2016 7:52:42 AM

Total Principal and Interest Payments Made by Your School - All Funds

Function	Fund		Principal (910)	Principal (920)	Interest (830)	Total (Principal +Interest)	Misc Other Uses (990)
5110	10	General Fund					
5110	20	Special Revenue Funds					
5110	30	Capital Projects Funds	226,000.00		279,467.28	505,467.28	
5110	40	Debt Service Fund					
5110	90	Permanent Fund					
5120	10	General Fund					
5120	20	Special Revenue Funds					
5120	30	Capital Projects Funds					
5120	40	Debt Service Fund					
Total Debt Payments - Governmental Funds			\$226,000.00		\$279,467.28	\$505,467.28	

Function	Fund		Principal (910)	Principal (920)	Interest (830)	Total (Principal +Interest)
5110	50	Enterprise Fund				
5110	60	Internal Service Fund				
5120	50	Enterprise Fund				
5120	60	Internal Service Fund				
Total Debt Payments - Proprietary Funds						

LEA : 116496503      Shamokin Area SD

Printed 11/18/2016 7:52:42 AM

Bond Details  
Governmental Funds

Debt Category	Debt Issue Date (MM/YYYY)	Principal Amounts Only				Current Portion Due Within One Year (Principal and Interest)	Interest Paid During Fiscal Year
		Debt at Beginning of Fiscal Year	Additions	Reductions / Repayments	Debt at End of Fiscal Year		
General Obligation Bonds/Notes – CIB	11/2011	3,390,000.00		226,000.00	3,164,000.00	226,000.00	209,010.30
General Obligation Bonds/Notes – CIB	06/2015	4,500,000.00			4,500,000.00	145,291.00	70,456.98
Compensated Absences		284,420.00	98,342.00		382,762.00	25,000.00	
Other Post-Employment Benefits (OPEB)		75,265.00	395,055.00	380,613.00	89,707.00		
Net Pension Liability		42,657,000.00			42,657,000.00		
<b>Totals for Debt Entered:</b>		<b>\$50,906,685.00</b>	<b>\$493,397.00</b>	<b>\$606,613.00</b>	<b>\$50,793,469.00</b>	<b>\$396,291.00</b>	<b>\$279,467.28</b>



LEA : 116496503      Shamokin Area SD

Printed 11/18/2016 7:52:43 AM

**General Fund (10)**

Section 1: Tuition/Purchased Services as Reported within Expenditure Detail	Amount
Tuition Reported in General Fund Expenditures 1000-560	2,866,432.18
Purchased Services in General Fund Expenditures 1000-594 and 1000-597	2,586.34
<b>Section 1 Total</b>	<b>\$2,869,018.52</b>

Section 2: Tuition Paid to Institution Types During Fiscal Year	Tuition Paid For Nonspecial Education	Tuition Paid For Special Education	Total
1    1306 Institutions			
2    Institutionalized Children's Programs	2,073.36	512.98	2,586.34
3    Juveniles Incarcerated in Adult Facilities			
4    Residential Treatment Facilities			
5    Other Local Education Agencies	49,358.24	12,212.09	61,570.33
6    Brick and Mortar Charter Schools			
7    Cyber Charter Schools	1,374,175.56	45,273.03	1,419,448.59
8    Career and Technology Centers	665,420.37	164,636.55	830,056.92
9    Approved Private Schools	17,739.81	4,389.14	22,128.95
10   PA Chartered Schools for the Deaf and Blind			
11   Private Residential Rehabilitative Institutions	228,373.40	56,503.54	284,876.94
12   Juvenile Detention Centers			
13   Special Program Jointures			
14   Other Tuition Not Included Elsewhere In This Section	199,091.71	49,258.74	248,350.45
<b>Section 2 Total</b>	<b>\$2,536,232.45</b>	<b>\$332,786.07</b>	<b>\$2,869,018.52</b>

LEA : 116496503      Shamokin Area SD

Printed 11/18/2016 7:52:44 AM

Food Service / Cafeteria Operations Fund (51)

<b>3000 Operation of Non-Instructional Services</b>	<b><u>Total</u></b>
<b>100 <u>Personnel Services – Salaries</u></b>	
100 Personnel Services – Salaries	28,607.08
<b>Total Personnel Services – Salaries</b>	<b>\$28,607.08</b>
<b>200 <u>Personnel Services – Employee Benefits</u></b>	
210 Group Insurance – Contracted Provider	16,571.12
220 Social Security Contributions	2,149.43
230 PSERS Retirement Contributions	7,392.07
250 Unemployment Compensation	502.92
260 Workers’ Compensation	257.46
<b>Total Personnel Services – Employee Benefits</b>	<b>\$26,873.00</b>
<b>300 <u>Purchased Professional and Technical Services</u></b>	
324 Professional Educational Services – Employee Training and Development Services	27.77
<b>Total Purchased Professional and Technical Services</b>	<b>\$27.77</b>
<b>400 <u>Purchased Property Services</u></b>	
430 Repairs and Maintenance Services	7,284.20
490 Other Purchased Property Services	36.00
<b>Total Purchased Property Services</b>	<b>\$7,320.20</b>
<b>500 <u>Other Purchased Services</u></b>	
570 Food Service Management	578,185.85
<b>Total Other Purchased Services</b>	<b>\$578,185.85</b>
<b>600 <u>Supplies</u></b>	
610 General Supplies	52,114.17
630 Food	554,916.98
<b>Total Supplies</b>	<b>\$607,031.15</b>
<b>700 <u>Property</u></b>	
740 Depreciation	70,081.00
750 Equipment – Original and Additional	479.00
<b>Total Property</b>	<b>\$70,560.00</b>
<b>800 <u>Other Objects</u></b>	
810 Dues and Fees	883.90
<b>Total Other Objects</b>	<b>\$883.90</b>
<b>Total 3000 Operation of Non-Instructional Services</b>	<b>\$1,319,488.95</b>

LEA : 116496503      Shamokin Area SD

Printed 11/18/2016 7:52:44 AM

Food Service / Cafeteria Operations Fund (51)

3100 Food Services	Elementary	Secondary	Federal	Total
100 <u>Personnel Services – Salaries</u>				
100 Personnel Services – Salaries			21,504.80	28,607.08
<b>Total Personnel Services – Salaries</b>			<b>\$21,504.80</b>	<b>\$28,607.08</b>
200 <u>Personnel Services – Employee Benefits</u>				
210 Group Insurance – Contracted Provider			12,457.01	16,571.12
220 Social Security Contributions			1,615.79	2,149.43
230 PSERS Retirement Contributions			5,556.84	7,392.07
250 Unemployment Compensation			378.06	502.92
260 Workers' Compensation			193.54	257.46
<b>Total Personnel Services – Employee Benefits</b>			<b>\$20,201.24</b>	<b>\$26,873.00</b>
300 <u>Purchased Professional and Technical Services</u>				
324 Professional Educational Services – Employee Training and Development Services			20.88	27.77
<b>Total Purchased Professional and Technical Services</b>			<b>\$20.88</b>	<b>\$27.77</b>
400 <u>Purchased Property Services</u>				
430 Repairs and Maintenance Services			5,475.75	7,284.20
490 Other Purchased Property Services			27.06	36.00
<b>Total Purchased Property Services</b>			<b>\$5,502.81</b>	<b>\$7,320.20</b>
500 <u>Other Purchased Services</u>				
570 Food Service Management			436,109.81	578,185.85
<b>Total Other Purchased Services</b>			<b>\$436,109.81</b>	<b>\$578,185.85</b>
600 <u>Supplies</u>				
610 General Supplies			40,532.26	52,114.17
630 Food			478,862.55	554,916.98
<b>Total Supplies</b>			<b>\$519,394.81</b>	<b>\$607,031.15</b>
700 <u>Property</u>				
740 Depreciation			52,681.98	70,081.00
750 Equipment – Original and Additional			360.08	479.00
<b>Total Property</b>			<b>\$53,042.06</b>	<b>\$70,560.00</b>
800 <u>Other Objects</u>				
810 Dues and Fees			664.45	883.90
<b>Total Other Objects</b>			<b>\$664.45</b>	<b>\$883.90</b>
<b>Total 3100 Food Services</b>			<b>\$1,056,440.86</b>	<b>\$1,319,488.95</b>

	<u>Food Service(51)</u>	<u>Child Care Operations(52)</u>	<u>Other Enterprise(58)</u>	<u>Internal Service(60)</u>	<u>Total</u>
<b>3000 <u>Operation of Non-Instructional Services</u></b>					
3100 Food Services	1,319,488.95				1,319,488.95
<b>Total Operation of Non-Instructional Services</b>	<b>\$1,319,488.95</b>				<b>\$1,319,488.95</b>
<b>TOTAL ACTUAL EXPENDITURES &amp; OTHER FINANCING USES</b>	<b>\$1,319,488.95</b>				<b>\$1,319,488.95</b>